



BASIC SWITCH FOR POSITION SWITCH 3SE51,
METAL ENCLOSURE,
ACC. TO EN50041 DEVICE CONNECTION 1X (M20X1.5)
1NO/1NC SNAP-ACTION CONTACTS W/O ACTUATOR
HEAD

| | | |
|---|--|-------------------------------|
| Manufacturer article number | | |
| • of the basic unit included in the scope of supply | | 3SE5112-0CA00 |

| General technical details: | | |
|----------------------------|---|---|
| product designation | | basic switch for standard position switches |
| Insulation voltage | | |
| • rated value | V | 400 |
| Degree of pollution | | class 3 |
| Thermal current | A | 6 |
| Operating current | | |
| • at AC-15 | | |
| • at 24 V / rated value | A | 6 |
| • at 125 V / rated value | A | 6 |
| • at 230 V / rated value | A | 6 |
| • at 400 V / rated value | A | 4 |
| • at DC-13 | | |
| • at 24 V / rated value | A | 3 |
| • at 125 V / rated value | A | 0.55 |
| • at 230 V / rated value | A | 0.27 |
| • at 400 V / rated value | A | 0.1 |
| Continuous current | | |

| | | |
|---|------------|--|
| • of the slow DIAZED fuse link | A | 6 |
| • of the quick DIAZED fuse link | A | 10 |
| • of the C characteristic circuit breaker | A | 1 |
| Mechanical operating cycles as operating time | | |
| • typical | | 15,000,000 |
| Electrical operating cycles as operating time | | |
| • with contactor 3RH11, 3RT1016, 3RT1017, 3RT1024, 3RT1025, 3RT1026 / typical | | 10,000,000 |
| • at AC-15 / at 230 V / typical | | 100,000 |
| Electrical operating cycles in one hour | | |
| • with contactor 3RH11, 3RT1016, 3RT1017, 3RT1024, 3RT1025, 3RT1026 | | 6,000 |
| Repeat accuracy | mm | 0.05 |
| Design of the contact element | | snap-action contacts |
| Number of NC contacts | | |
| • for auxiliary contacts | | 1 |
| Design of the switching function | | Positive opening with appropriate positive opening actuator head |
| Number of NO contacts | | |
| • for auxiliary contacts | | 1 |
| Resistance against vibration | | 0.35 mm / 5g |
| Resistance against shock | | 30g / 11 ms |
| Ambient temperature | | |
| • during operating | °C | -25 ... +85 |
| • during storage | °C | -40 ... +90 |
| Product specification | | |
| • for dimensions | | EN 50041 |
| Width of the sensor | mm | 40 |
| material | | |
| • of the housing | | metal |
| Actuating speed | mm/s / m/s | 0.1 ... 2.5 |
| Minimum actuating force / in activation direction | N | 20 |
| Protection class IP | | IP66/IP67 |
| Built in orientation | | any |
| Cable gland version | | 1x (M20 x 1.5) |
| Design of the electrical connection | | screw-type terminals |
| Item designation | | |
| • according to DIN 40719 extendable after IEC 204-2 | | S |
| • according to DIN EN 61346-2 | | B |

Certificates/approvals:

| | | |
|--------------------------|--------------------------------|---|
| General Product Approval | For use in hazardous locations | Functional Safety / Safety of Machinery |
|--------------------------|--------------------------------|---|



CQC

[ROSTEST](#)



UL



VDE

[DEKRA EXAM, DMT](#)

[TÜV](#)

| | |
|-------------------|-------|
| Test Certificates | other |
|-------------------|-------|

[Manufacturer](#)

[Manufacturer](#)

Further information:

Information- and Downloadcenter (Catalogs, Brochures,...)

<http://www.siemens.com/industrial-controls/catalogs>

Industry Mall (Online ordering system)

<http://www.siemens.com/industrial-controls/mall>

CAX-Online-Generator

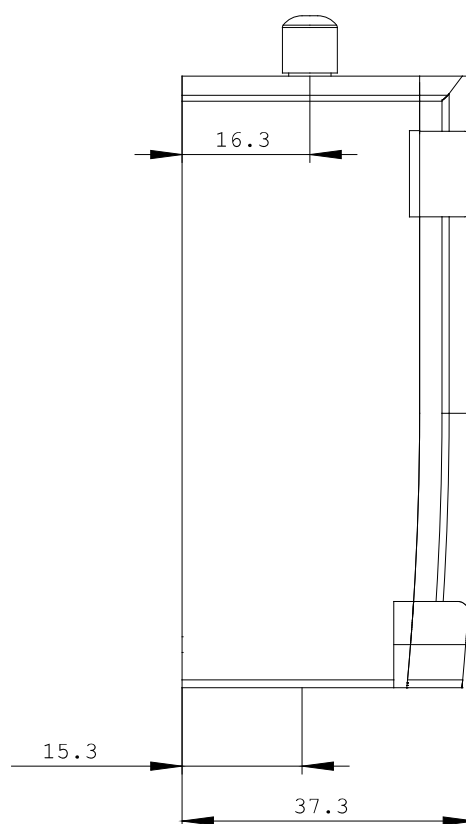
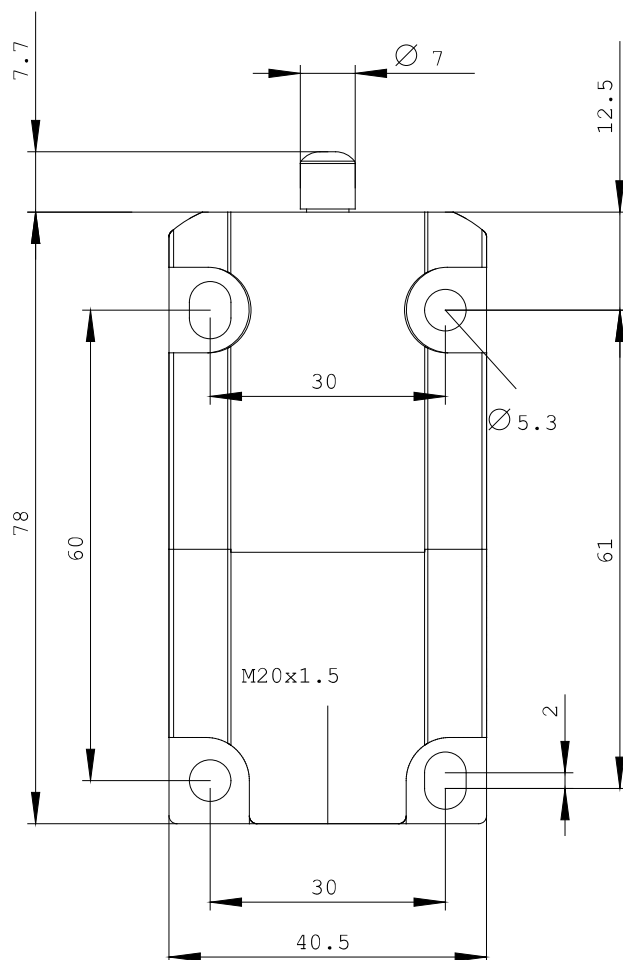
<http://www.siemens.com/cax>

Service&Support (Manuals, Certificates, Characteristics, FAQs,...)

<http://support.automation.siemens.com/WW/view/en/3SE5112-0CA00/all>

Image database (product images, 2D dimension drawings, 3D models, device circuit diagrams, ...)

http://www.automation.siemens.com/bilddb/cax_en.aspx?mlfb=3SE5112-0CA00



last change:

Nov 24, 2011