



SIRIUS POSITION SWITCH METAL HOUSING 40MM,  
TO EN50041 DEVICE CONNECTION 1X (M20X1,5)  
1NO/1NC SLOW-ACTION CONTACTS ROTARY  
ACTUATOR RIGHT/LEFT ADJUSTABLE,  
METAL LEVER 27MM LONG AND STAINL. STEEL  
ROLLER 19MM

<b>Manufacturer article number</b>		
• of the basic unit included in the scope of supply		<a href="#">3SE5112-0BA00</a>
• of the actuator head for position switches included in the scope of supply		<a href="#">3SE5000-0AH00</a>
• of the operating lever included in the scope of supply		<a href="#">3SE5000-0AA02</a>
<b>General technical details:</b>		
<b>product designation</b>		standard position switch
<b>Insulation voltage</b>		
• rated value	V	400
<b>Degree of pollution</b>		class 3
<b>Thermal current</b>	A	6
<b>Operating current</b>		
• at AC-15		
• at 24 V / rated value	A	6
• at 125 V / rated value	A	6
• at 230 V / rated value	A	3
• at DC-13		
• at 24 V / rated value	A	3
• at 125 V / rated value	A	0.55
• at 230 V / rated value	A	0.27
<b>Continuous current</b>		

• of the slow DIAZED fuse link	A	6
• of the quick DIAZED fuse link	A	10
• of the C characteristic circuit breaker	A	1
<b>Mechanical operating cycles as operating time</b>		
• typical		15,000,000
<b>Electrical operating cycles as operating time</b>		
• with contactor 3RH11, 3RT1016, 3RT1017, 3RT1024, 3RT1025, 3RT1026 / typical		10,000,000
• at AC-15 / at 230 V / typical		100,000
<b>Electrical operating cycles in one hour</b>		
• with contactor 3RH11, 3RT1016, 3RT1017, 3RT1024, 3RT1025, 3RT1026		6,000
<b>Repeat accuracy</b>	mm	0.05
<b>Design of the contact element</b>		slow-action contacts
<b>Number of NC contacts</b>		
• for auxiliary contacts		1
<b>Design of the switching function</b>		positive opening
<b>Number of NO contacts</b>		
• for auxiliary contacts		1
<b>Resistance against vibration</b>		0.35 mm / 5g
<b>Resistance against shock</b>		30g / 11 ms
<b>Ambient temperature</b>		
• during operating	°C	-25 ... 85
• during storage	°C	-40 ... 90
<b>Product specification</b>		
• for dimensions		EN 50041
<b>Width of the sensor</b>	mm	40
<b>material</b>		
• of the housing		metal
<b>Material / of the housing / of the switch head</b>		metal
<b>Design of the operating mechanism</b>		metal lever, 27 mm long, step 9 mm, stainless steel roller 19 mm
<b>Actuating speed</b>	mm/s / m/s	0.4 ... 1.5
<b>Protection class IP</b>		IP66/IP67
<b>Built in orientation</b>		any
<b>Cable gland version</b>		1x (M20 x 1.5)
<b>Design of the electrical connection</b>		screw-type terminals
<b>Item designation</b>		
• according to DIN 40719 extendable after IEC 204-2		S
• according to DIN EN 61346-2		B

## Certificates/approvals:

### General Product Approval

For use in  
hazardous  
locations

Functional Safety /  
Safety of  
Machinery



CQC

[ROSTEST](#)



UL



VDE

[DEKRA EXAM,  
DMT](#)

[TÜV](#)

### Test Certificates

### other

[Manufacturer](#)

[other](#)

[Manufacturer](#)

## Further information:

### Information- and Downloadcenter (Catalogs, Brochures,...)

<http://www.siemens.com/industrial-controls/catalogs>

### Industry Mall (Online ordering system)

<http://www.siemens.com/industrial-controls/mall>

### CAX-Online-Generator

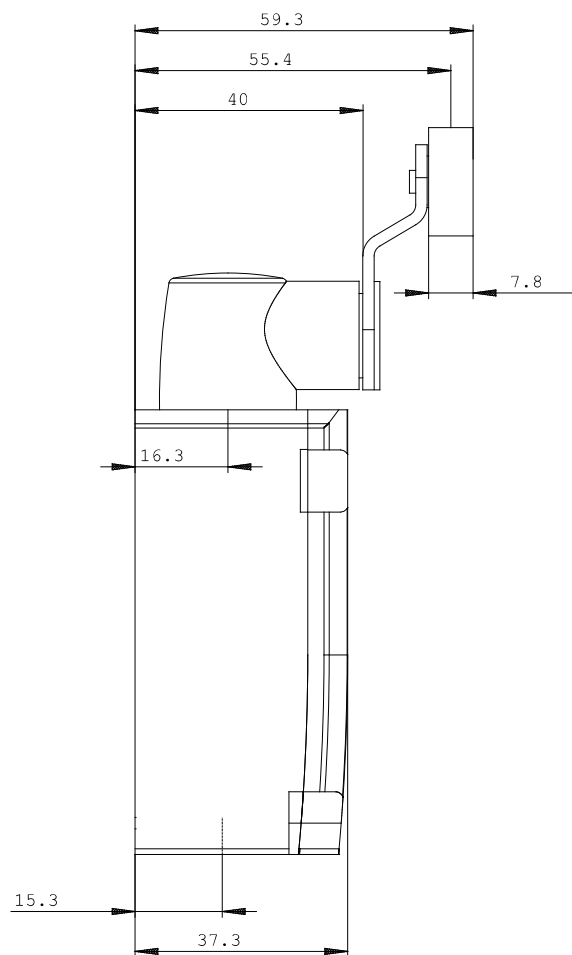
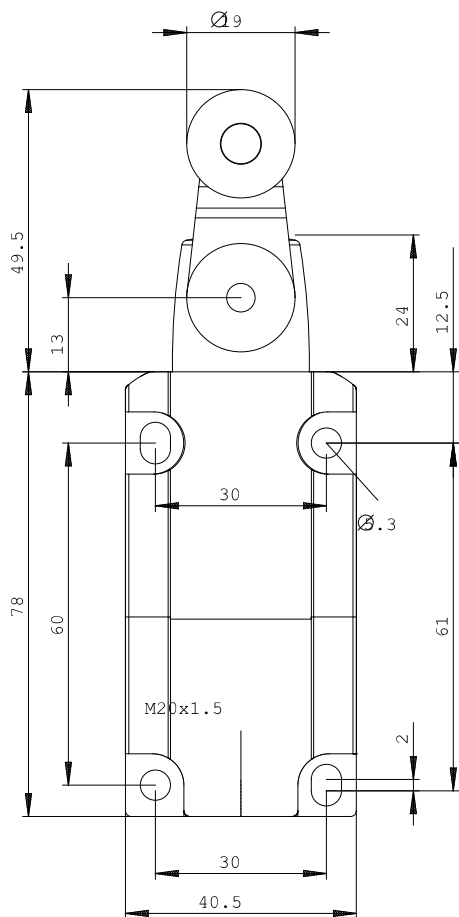
<http://www.siemens.com/cax>

### Service&Support (Manuals, Certificates, Characteristics, FAQs,...)

<http://support.automation.siemens.com/WW/view/en/3SE5112-0BH02/all>

### Image database (product images, 2D dimension drawings, 3D models, device circuit diagrams, ...)

[http://www.automation.siemens.com/bilddb/cax\\_en.aspx?mlfb=3SE5112-0BH02](http://www.automation.siemens.com/bilddb/cax_en.aspx?mlfb=3SE5112-0BH02)



last change:

Nov 24, 2011