



SEPARATE ACTUATOR VERTICAL MOUNTING FOR POS. W. TUMBLER 3SE5312../3SE5322.. AND ASI 3SF13... AND POS. WITH SEPARATE ACTUATOR 3SE51../3SE52.. AND ASI 3SF11../3SF21..

General technical details:		
product designation		actuator
Mechanical operating cycles as operating time <ul style="list-style-type: none">• typical		1,000,000
Resistance against vibration		0.35 mm / 5g
Resistance against shock		30g / 11 ms
Ambient temperature <ul style="list-style-type: none">• during operating• during storage	°C	-25 ... +85
	°C	-40 ... +90
Design of the operating mechanism		actuator with transverse fixing
Built in orientation		any
Item designation <ul style="list-style-type: none">• according to DIN 40719 extendable after IEC 204-2 / according to IEC 750• according to DIN EN 61346-2		E
		T

Certificates/approvals:

General Product Approval

Functional Safety / Safety of Machinery

Test Certificates



CQC



CSA

[ROSTEST](#)



VDE

[TÜV](#)

[Manufacturer](#)

other

[Manufacturer](#)

Further information:

Information- and Downloadcenter (Catalogs, Brochures,...)

<http://www.siemens.com/industrial-controls/catalogs>

Industry Mall (Online ordering system)

<http://www.siemens.com/industrial-controls/mall>

CAX-Online-Generator

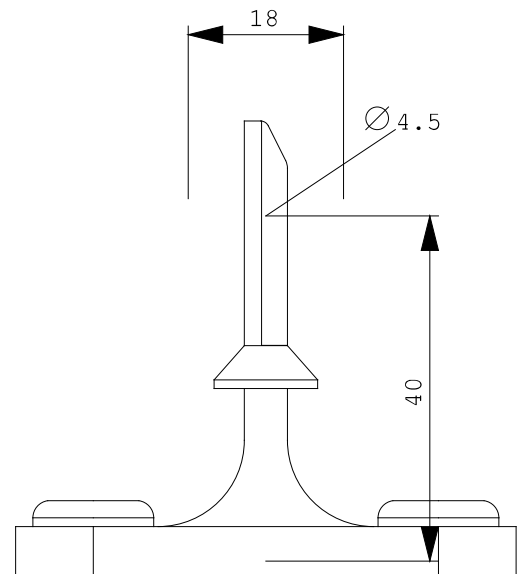
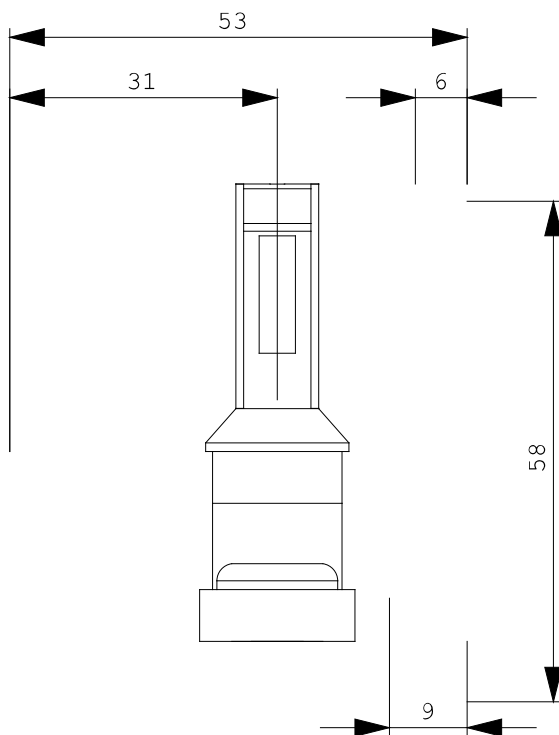
<http://www.siemens.com/cax>

Service&Support (Manuals, Certificates, Characteristics, FAQs,...)

<http://support.automation.siemens.com/WW/view/en/3SE5000-0AV02/all>

Image database (product images, 2D dimension drawings, 3D models, device circuit diagrams, ...)

http://www.automation.siemens.com/bilddb/cax_en.aspx?mlfb=3SE5000-0AV02



last change:

Nov 28, 2011