


TWIST LEVER FOR POSITION SWITCH 3SE52 METAL  
LEVER 21MM LONG PLASTIC ROLLER 19MM

### General technical details:

<b>product designation</b>		actuator for part-turn actuator
<b>Mechanical operating cycles as operating time</b>		
• typical		15,000,000
<b>Resistance against vibration</b>		0.35 mm / 5g
<b>Resistance against shock</b>		30g / 11 ms
<b>Ambient temperature</b>		
• during operating	°C	-25 ... +85
• during storage	°C	-40 ... +90
<b>Design of the operating mechanism</b>		metal lever, 21 mm long, straight, plastic roller 19 mm
<b>Built in orientation</b>		any
<b>Item designation</b>		
• according to DIN 40719 extendable after IEC 204-2 / according to IEC 750		E
• according to DIN EN 61346-2		T

### Certificates/approvals:

General Product Approval		Functional Safety / Safety of Machinery	Test Certificates
 CQC	 CSA	<a href="#">ROSTEST</a>	<a href="#">TÜV</a>
		 VDE	<a href="#">Manufacturer</a>
<b>other</b>			
<a href="#">Manufacturer</a>			

### Further information:

#### Information- and Downloadcenter (Catalogs, Brochures,...)

<http://www.siemens.com/industrial-controls/catalogs>

#### Industry Mall (Online ordering system)

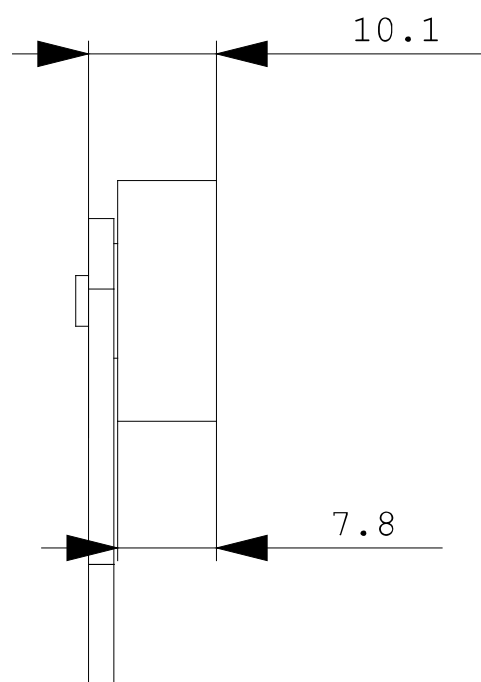
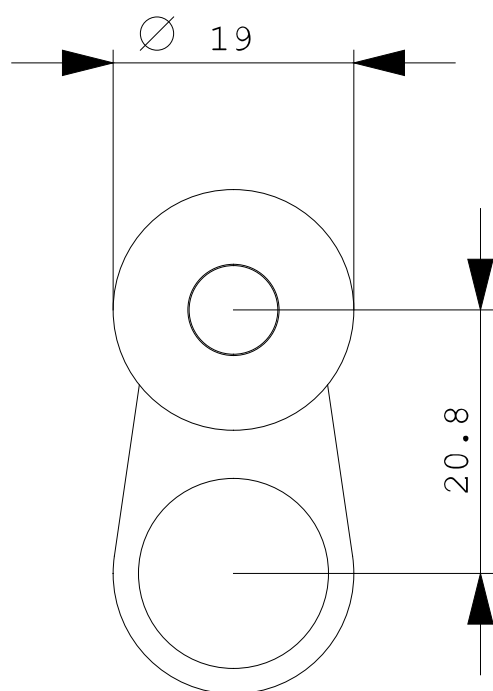
<http://www.siemens.com/industrial-controls/mall>

#### CAX-Online-Generator

<http://www.siemens.com/cax>

#### Service&Support (Manuals, Certificates, Characteristics, FAQs,...)

<http://support.automation.siemens.com/WW/view/en/3SE5000-0AA21/all>



last change:

Nov 28, 2011