

CURRENT TRANSFORMER,  
3-PHASE FOR MOUNTING ONTO CONTACTOR AND  
INSTALLING AS A SINGLE UNIT 820A / 1A,  
0.1VA



General technical details:		
product designation		current transformer for overload protection
Current		
• at the input / minimum	A	205
• at the input / maximum	A	820
• secondary side / maximum	A	1
Ratio input current/output current		820/1 A
Apparent loss power		
• maximum	V·A	25
• minimum	V·A	1.6
Number of poles		3
Item designation / according to DIN 40719 extendable after IEC 204-2 / according to IEC 750		T
Item designation / according to DIN EN 61346-2		T
Mechanical design:		
Design of the electrical connection		
• secondary side		screw-type terminals
• at the input		flat connector
Type of mounting		screw mounting for mounting on contactors and stand-alone installations

<b>Width</b>	mm	230
<b>Height</b>	mm	195
<b>Depth</b>	mm	170

#### Ambient conditions:

<b>Protection class IP</b>		IP20
<b>Ambient temperature</b> • during operating	°C	-25 ... 60

#### Certificates/approvals:

<b>General Product Approval</b>	<b>For use in hazardous locations</b>	<b>other</b>
---------------------------------	---------------------------------------	--------------



[ROSTEST](#)



[Manufacturer](#)

#### Further information:

##### Information- and Downloadcenter (Catalogs, Brochures,...)

<http://www.siemens.com/industrial-controls/catalogs>

##### Industry Mall (Online ordering system)

<http://www.siemens.com/industrial-controls/mall>

##### CAX-Online-Generator

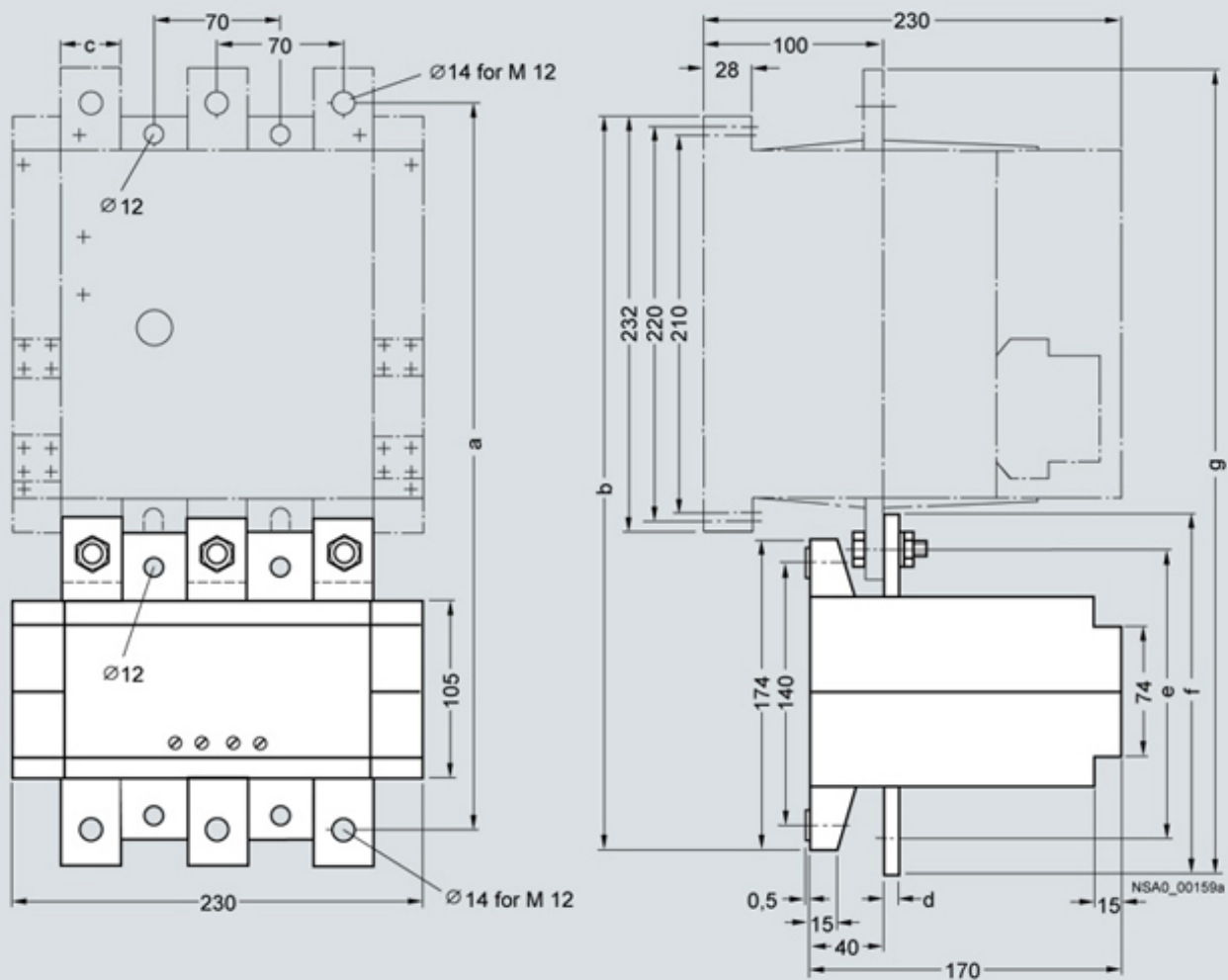
<http://www.siemens.com/cax>

##### Service&Support (Manuals, Certificates, Characteristics, FAQs,...)

<http://support.automation.siemens.com/WW/view/en/3UF1868-3GA00/all>

##### Image database (product images, 2D dimension drawings, 3D models, device circuit diagrams, ...)

[http://www.automation.siemens.com/bilddb/cax\\_en.aspx?mlfb=3UF1868-3GA00](http://www.automation.siemens.com/bilddb/cax_en.aspx?mlfb=3UF1868-3GA00)



Current transformers	Contactors	a	b	c	d	e	f	g
3UF18 68-3FA00	3TF68	390	398	30	5	145	175	420
3UF18 68-3GA00	3TF68	410	408	40	8	155	195	450

last change:

Oct 24, 2011