

A

B

C

D

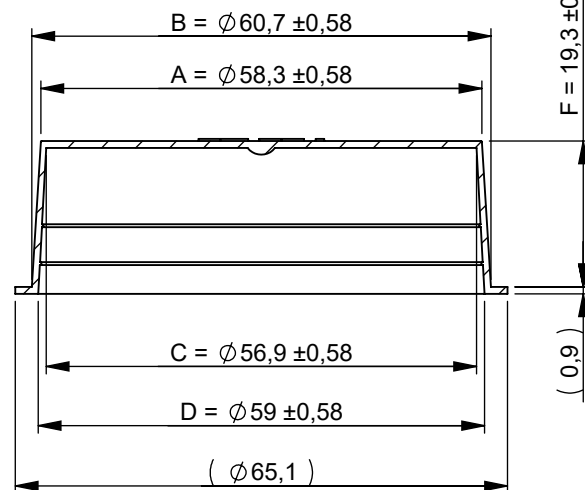
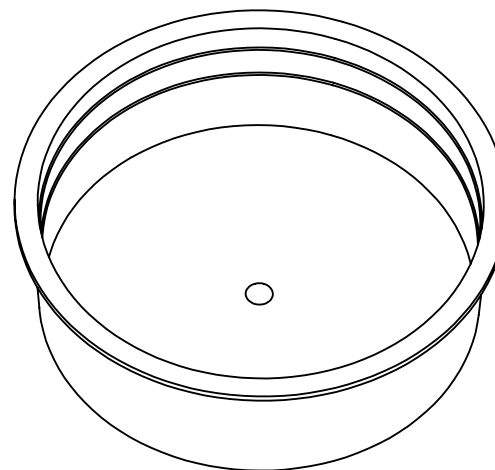
E

F

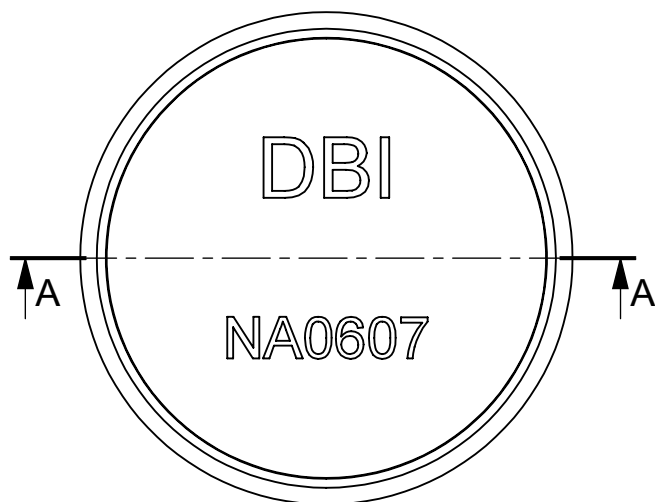
G

## REVISIONS

REV.	DESCRIPTION	DATE	AUTHOR
1	Initial Design	27-06-2003	KP
2	Drawing according to measurement report per 05-11-2003	07-11-2003	HJ
3	Drawing layout changed	18-05-2005	KPE
4	Part number changed from 410085 to NA0607A-AA.	13-12-2007	KV
5	New mould. Drawing is according to measurement report per 25-03-2008.	11-04-2008	KV
6	Drawing is according to measurement report per 07-11-2011.	10-11-2011	KV
7	Letter E and G removed. Related tolerances removed too. "Part Weight" put into brackets,	08-01-2013	KV

SECTION A-A  
SCALE 1 : 1

Actual size



Comments:  
Drawing is according to  
the latest measurement report.

Comments:  
Drawing is valid for caps both with  
(NA0607L-AA) and without vent hole  
(NA0607A-AA).

Sheet: A4	Scale: 2:1	DBI A/S Project No: 02529	Drawing: NA0607A-AA
Material: PELD	Colour: All	DBI A/S Product No: NA0607A-AA	
Part Weight: (5,80) g	Part Surface Area: 137,19 cm <sup>2</sup>	Product Name: Conical cap 0607	
<b>DBI plastics</b> Protect your business			Dimensions are given in mm. Dimensions without tolerances according to DS 812 / DIN16901
			This drawing belongs to DBI Plastics A/S and may not be used or shown without permission.