

Data sheet for SIMOTICS S-1FK2

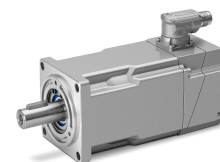


Figure similar

MLFB-Ordering data

1FK2203-2AG11-0SA0

Client order no. :

Order no. :

Offer no. :

Remarks :

Item no. :

Consignment no. :

Project :

Basic motor data		Mechanical data	
Motor type	Permanent-magnet synchronous motor, Natural cooling, IP65	Design acc. to Code I	IM B5 (IM V1, IM V3)
Motor type	Compact	Vibration severity grade	Grade A
Static torque	0.64 Nm	Shaft height	30
Static current	1.4 A	Flange size (AB)	60 mm
Maximum torque	1.85 Nm	Centering ring (N)	50 mm
Maximum current	4.2 A	Hole circle (M)	70 mm
Maximum speed	8000 rpm	Screw-on hole (S)	5.5 mm
Rotor moment of inertia	0.220 kgcm ²	Overall length (LB)	131 mm
Weight	1.6 kg	Diameter of shaft (D)	14 mm
		Length of shaft (E)	30 mm
		Length of flange diagonal (P)	81 mm
		Shaft extension	Plain shaft

Rated data

SINAMICS S210, 1AC 230V

Rated speed	3000 rpm
Rated torque	0.64 Nm
Rated current	1.4 A
Rated power	0.20 kW

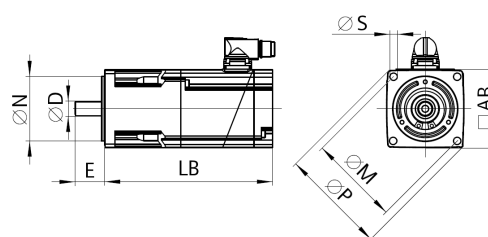


Figure similar

Encoder system

Encoder system	Encoder AS22DQC: Absolute encoder single turn 22 bit
----------------	--

Motor connection

Connection type	OCC for S210
Connector size	M12



Figure similar

MLFB-Ordering data 1FK2203-2AG11-0SA0

Holding brake	
Holding torque	1.30 Nm
Opening time	40 ms
Closing time	10 ms
Maximum single switching energy ¹⁾	62.0 J
Service life, operating energy	17500 J
Holding current	0.15 A
Break-induced current for 500 ms ²⁾	0.8 A

¹⁾ Up to three consecutive emergency stops and up to 25% of all emergency stops as a Wmax high energy stop possible.

²⁾ Typcial value for 20°C ambient temperature. At -15°C the break-induced currents can be increased by up to 30%.