

A

B

C

D

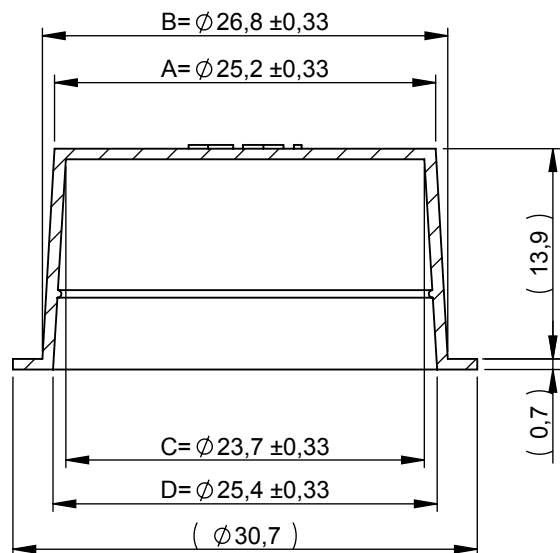
E

F

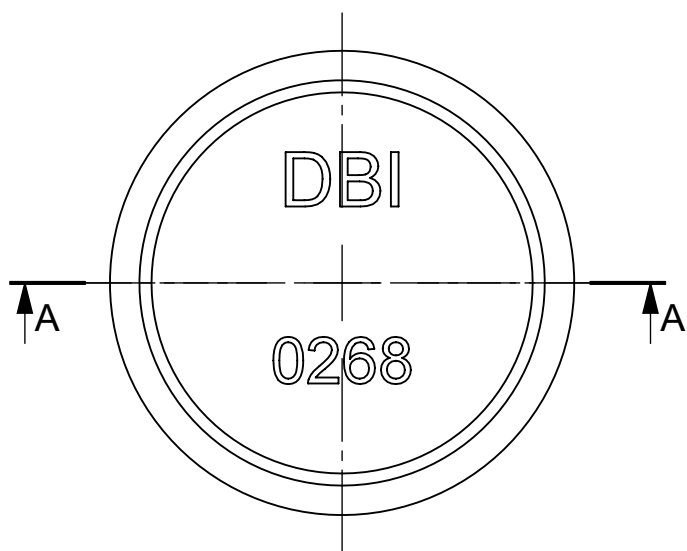
G

REVISIONS

REV.	DESCRIPTION	DATE	AUTHOR
1	According to measurement report per 11-01-2006	11-01-2006	KV
2	Part number changed from 410042 to NA0268A-AA. According to measurement report per 02-10-2007 - tolerences added	02-10-2007	TGJ
3	Drawing is according to measurement report per 28-04-2010.	28-04-2010	KV
4	Letters E, F and G removed. Matching tolerances removed too. Measures put into brackets. Part weight put into brackets.	21-01-2013	KV

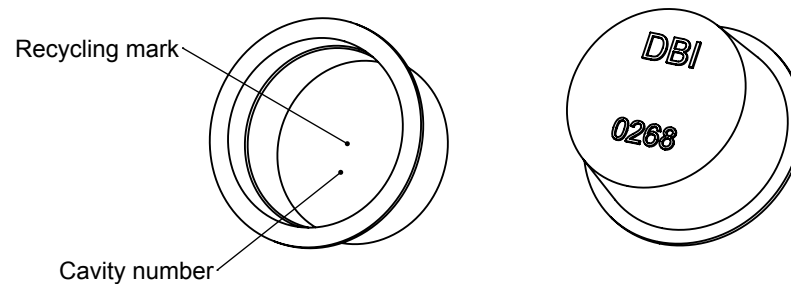


A-A



Comment:
Drawing is according to
the latest measurement report.

Comment:
Drawing is valid for cap
NA0268L-AA with vent hole
NA0268A-AA without vent hole
NA0268L-AU with vent hole and UV treatment



Actual size

Sheet: A4	Scale: 2:1	DBI A/S Project No: 02529	Drawing: NA0268A-AA
Material: PE-LD	Colour: All	DBI A/S Product No: NA0268A-AA	
Part Weight: (1,35) g	Part Surface Area: 36.78 cm ²	Product Name: Conical cap 0268	
DBI plastics Protect your business			Dimensions are given in mm. Dimensions without tolerances according to DS 812 / DIN16901 This drawing belongs to DBI Plastics A/S and may not be used or shown without permission.

A

B

C

D

E

F

G