

PRIMA LED Ex



... for explosion hazard environment group II, category 3 (zone 2, 22).

USE

The light fitting is suitable for the environment with a danger of explosion of gas, dust and combustible fumes. The light fittings meet the requirements of Government Decree 116/2016 Coll. and European Community Directive No.2014/34/EU.

The light fitting is certified for the environment:
Ex II 3G Ex nA IIC T6 Gc
Ex II 3D Ex tc IIIC T85°C Dc

The basic requirements for safety and health protection are secured by the verification of conformity with the standards according to ČSN EN 60079-15, ČSN EN 60079-0 and ČSN EN 60079-31.

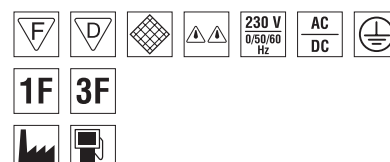
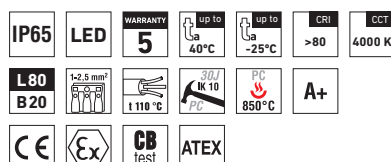
The light fitting is resistant to dust, moisture and spouting water. The body and the diffuser made of polycarbonate (PC) have the increased resistance against deformation and impact.

(It is necessary to consider exhalation in the air reducing the usability of the plastic at installations in an aggressive environment, see also page 167).

ADVANTAGES

- Light fitting protection **IP65**
- Maximum ambient temperature up to **t_a = 40°C**
- Lifetime: 50,000 hours / L80B20
- Diffuser: translucent polycarbonate (PC) = high mechanical resistance
- Body: grey polycarbonate (PC) = high mechanical resistance
- Up to 45 % lower electricity consumption when compared to tubes T5
- Constant luminous flux even in ambient temperature of -25 °C
- Standard model - CRI > 80: 4000 K

- At request CRI > 80: 3000 K, 5000 K
- Clips: stainless steel + polyamide + 15 % glass fibre
- Through-wiring of up to 10 wires at body
- Certification: **ATEX AR16ATEX078X**, CB
- At request also versions according to the standard for EAC states (Russia, Kazakhstan, Belarus, Armenia).



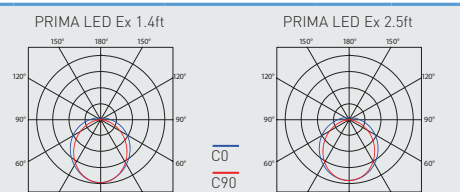
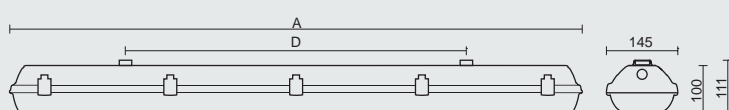
PRIMA LED Ex PCc



TECHNICAL DESCRIPTION

- Light fitting protection: IP65
- Maximum ambient temperature: $t_a = 40^\circ\text{C}$
- Minimum ambient temperature: $t_a = -20^\circ\text{C}$
- Maximum system efficacy: 121 lm/W
- The watt and lumen values can vary by $\pm 7,5\%$
- Standard model - CRI > 80: 4000 K
- Lifetime: 50,000 hours / L80B20
- Diffuser: translucent polycarbonate (PC), UV stable, impact-resistant
- Body: grey polycarbonate (PC), UV stable, impact-resistant
- Reflector: steel sheet, white colour (RAL 9003)
- Clips: stainless steel + polyamide + 15 % glass fibre

- Cable glands: screwed PG 13.5 ATEX
- Distance part: polyamide + 10 % glass fibre, serves to suspend the reflector during assembly
- Terminal block: screwless, three-pole incl. earthing tape & screw for a perfect connection (basic version)
- Installation: package contains stainless hooks and stainless brackets
- Electric equipment: LED modules, current driver, halogen-free wires with higher temperature resistance up to 110°C



Code	Type	Luminous flux of LED modules [lm]	Luminous flux of light fitting [lm]	Power consumption [W]	System efficacy [lm/W]	Net weight [kg]	A [mm]	D [mm]
For ambient temperature $t_a = 40^\circ\text{C}$ - body: grey polycarbonate - diffuser: translucent polycarbonate								
14810	PRIMA LED Ex 1.4ft PCc 3200/840	3200	2770	24	115	3,2	1272	700
14820	PRIMA LED Ex 1.4ft PCc 4400/840	4400	3730	31	120	3,3	1272	700
14830	PRIMA LED Ex 1.5ft PCc 4000/840	4000	3430	30	114	4,1	1572	940
14840	PRIMA LED Ex 1.5ft PCc 5500/840	5500	4790	40	120	4,2	1572	940
14850	PRIMA LED Ex 2.4ft PCc 6400/840	6400	5200	43	121	3,4	1272	700
14860	PRIMA LED Ex 2.4ft PCc 8800/840	8800	7260	60	121	3,5	1272	700
14870	PRIMA LED Ex 2.5ft PCc 8000/840	8000	6490	54	120	4,3	1572	940
14880	PRIMA LED Ex 2.5ft PCc 11000/840	11000	8710	73	119	4,4	1572	940

14810 PRIMA LED Ex 1.4ft PCc 3200/840 = suitable replacement for PRIMA Ex 136 PCc E - $1 \times 36\text{ W}$
 14830 PRIMA LED Ex 1.5ft PCc 4000/840 = suitable replacement for PRIMA Ex 158 PCc E - $1 \times 58\text{ W}$
 14850 PRIMA LED Ex 2.4ft PCc 6400/840 = suitable replacement for PRIMA Ex 236 PCc E - $2 \times 36\text{ W}$
 14870 PRIMA LED Ex 2.5ft PCc 8000/840 = suitable replacement for PRIMA Ex 258 PCc E - $2 \times 58\text{ W}$

PRIMA LED Ex PCc

Non-dimmable driver - stainless clips (c)

Code	Type	1F	3F	M1h	M3h	3F M1h	3F M3h
14810	PRIMA LED Ex 1.4ft PCc 3200/840	14811	14813	x	x	x	x
14820	PRIMA LED Ex 1.4ft PCc 4400/840	14821	14823	x	x	x	x
14830	PRIMA LED Ex 1.5ft PCc 4000/840	14831	14833	x	x	x	x
14840	PRIMA LED Ex 1.5ft PCc 5500/840	14841	14843	x	x	x	x
14850	PRIMA LED Ex 2.4ft PCc 6400/840	14851	14853	x	x	x	x
14860	PRIMA LED Ex 2.4ft PCc 8800/840	14861	14863	x	x	x	x
14870	PRIMA LED Ex 2.5ft PCc 8000/840	14871	14873	x	x	x	x
14880	PRIMA LED Ex 2.5ft PCc 11000/840	14881	14883	x	x	x	x

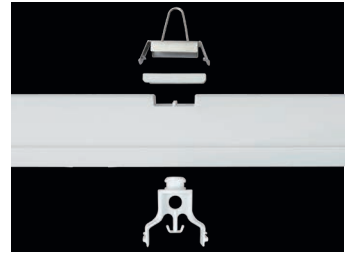
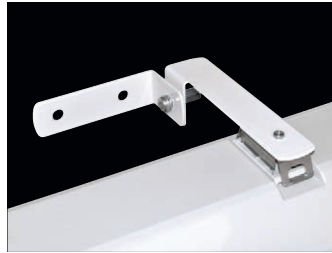
Example of type marking: 14853 = PRIMA LED Ex 2.4ft PCc 6400/840 **3F**

LEGEND

- 1F** - 1 phase wiring cables for through-wiring
3F - 3 phase wiring cables for through-wiring

LIGHT FITTING ATTACHMENT

- a) Directly to a ceiling or a wall with the use of screws and stainless brackets
- b) Suspension with the use of stainless hooks
- c) Attachment with the use of side hangers to the wall



LIGHT FITTING DETAILED VIEW

PRIMA LED Ex



ATEX CERTIFICATE

PRIMA LED Ex



EAC CERTIFICATE

PRIMA LED Ex

