

Data sheet for SIMOTICS S-1FK2

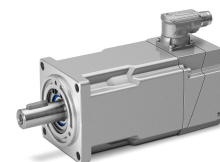


Figure similar

MLFB-Ordering data

1FK2208-5AC10-0MA0

Client order no. :

Order no. :

Offer no. :

Remarks :

Item no. :

Consignment no. :

Project :

Basic motor data		Mechanical data	
Motor type	Permanent-magnet synchronous motor, Natural cooling, IP64	Design acc. to Code I	IM B5 (IM V1, IM V3)
Motor type	Compact	Vibration severity grade	Grade A
Static torque	27.00 Nm	Shaft height	80
Static current	14.6 A	Flange size (AB)	155 mm
Maximum torque	80.00 Nm	Centering ring (N)	130 mm
Maximum current	51.5 A	Hole circle (M)	165 mm
Maximum speed	4700 rpm	Screw-on hole (S)	11.0 mm
Rotor moment of inertia	53.600 kgcm ²	Overall length (LB)	276 mm
Weight	19.3 kg	Diameter of shaft (D)	32 mm
		Length of shaft (E)	58 mm
		Length of flange diagonal (P)	202 mm
		Shaft extension	Plain shaft

Rated data

SINAMICS S210, 3AC 400V

Rated speed	2000 rpm
Rated torque	19.10 Nm
Rated current	10.8 A
Rated power	4.00 kW

Encoder system

Encoder system	Encoder AM22DQC: Absolute encoder 22 bit + 12 bit multiturn
----------------	---

Motor connection

Connection type	OCC for S210
Connector size	M23

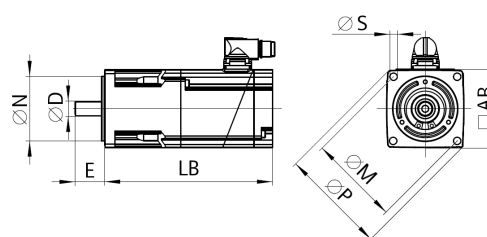
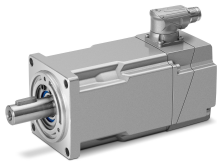


Figure similar



MLFB-Ordering data 1FK2208-5AC10-0MA0

Figure similar

Holding brake	
Holding torque	32.00 Nm
Opening time	120 ms
Closing time	35 ms
Maximum single switching energy ¹⁾	4800.0 J
Service life, operating energy	2400000 J
Holding current	0.5 A
Break-induced current for 500 ms ²⁾	1.4 A

¹⁾ Up to three consecutive emergency stops and up to 25% of all emergency stops as a Wmax high energy stop possible.

²⁾ Typcial value for 20°C ambient temperature. At -15°C the break-induced currents can be increased by up to 30%.