

# Lock grip with return spring stainless steel, lock grip upward or downward

Item description/product images



## Description

### Material:

Stainless steel

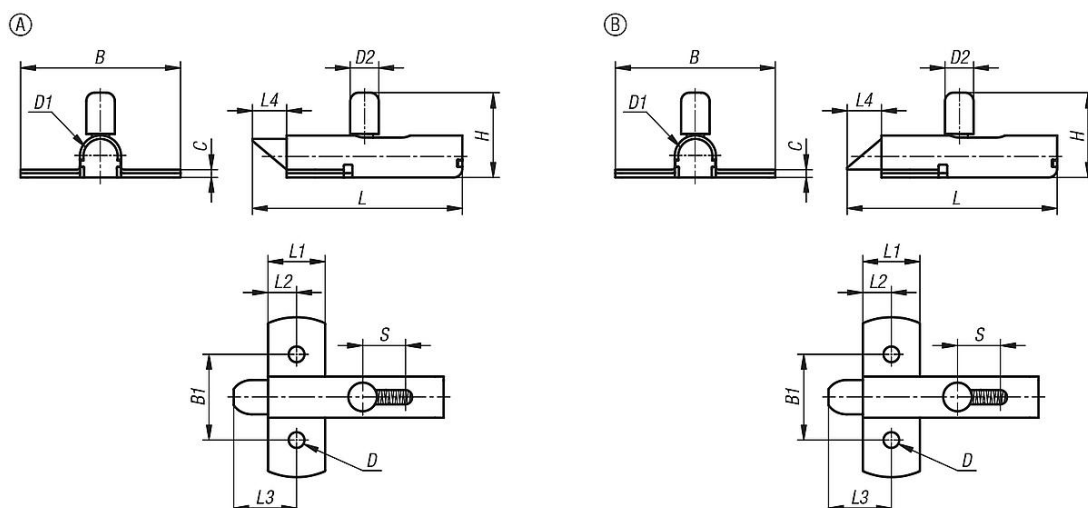
### Note:

Lock grips with return spring can be easily screwed onto doors, hatches and hoods. These lock grips are available in two different variants: bevelled upward or bevelled downward. The bevelled surface allows the application to be closed or opened without actuating the lock grip. The integrated return spring always brings the lock grip back to its original position.

### Type of operation:

When the lever is pushed, the lock grip moves into the open position and the door can be opened. When the door is pushed to, it is locked automatically by the bevel.

## Drawings



## Overview of items

### Lock grip with return spring stainless steel

Order No.	Form	Form-Type	B	B1	C	D	D1	D2	H	Travel S	L	L1	L2	L3	L4
K1693.07356	A	Lock grip upward	56	30	2,7	5,5	12	10	29,7	13	73,5	20	10	22	12
K1693.17356	B	Lock grip downward	56	30	2,7	5,5	12	10	29,7	13	73,5	20	10	22	12