

Sockets and plastic inserts

Item description/product images



Description

Material:

Socket tool steel.
Insert special PETP.

Version:

Socket chromium-plated.

Note:

Socket:

Socket with 1/2" drive, made by Hazet. Specially modified, for holding the plastic inserts. The plastic inserts are securely held by the inner form and length of the socket. Optimal drive torque is transmitted to the screw head. By careful use, metallic contact between the socket and the hex head is prevented. Contact corrosion is eliminated.

Plastic insert:

Plastic inserts for tightening and loosening the screws and nuts of the KIPP product range NOVOnox hygienic. Polished and sensitive surfaces are protected and a later contact corrosion is avoided.

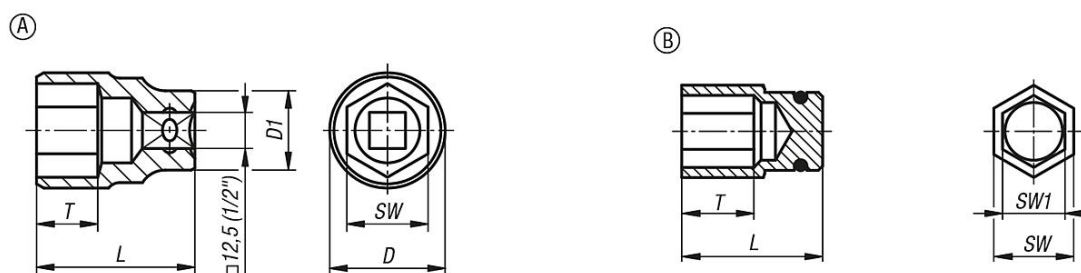
The plastic inserts are made from a specially manufactured PETP and have FDA approval. The inserts are pressed into the special socket manually. The form fit and locking device ensures an optimal hold in the socket. No special tools are required to exchange the worn out inserts.

By a tightening torque of μ 0.12 coefficient of friction (DIN for A4-70 for screws and nuts), the plastic inserts have a life expectancy of up to 1000 alternating cycles.

Drawing reference:

- A) Socket
- B) Plastic insert

Drawings



Overview of items

Order No.	Item	D	D1	L	T	SW	SW1	Suitable for hexagon screws
K1361.1012	Socket	15,3	22	36,6	10,6	10	-	-
K1361.1112	Socket	16,6	22	37,3	10,1	11	-	-
K1361.1312	Socket	19,1	22	37,3	10,6	13	-	-
K1361.1612	Socket	22,9	23,6	37,1	11,3	16	-	-
K1361.1912	Socket	26,6	23	37	13,2	19	-	-
K1361.2112	Socket	29	25	36,8	12,9	21	-	-
K1361.2712	Socket	35,2	25	44,4	18,1	27	-	-
K1361.0704	Protective Insert	-	-	17,4	5,5	10	7	M4

Sockets and plastic inserts

Overview of items

Order No.	Item	D	D1	L	T	SW	SW1	Suitable for hexagon screws
K1361.0805	Protective Insert	-	-	18	6	11	8	M5
K1361.1006	Protective Insert	-	-	19,5	10	13	10	M6
K1361.1308	Protective Insert	-	-	21,5	11	16	13	M8
K1361.1610	Protective Insert	-	-	22	13,5	19	16	M10
K1361.1812	Protective Insert	-	-	21,5	12	21	18	M12
K1361.2416	Protective Insert	-	-	26,5	18	27	24	M16