

## Square tube connectors three-way swivel

### Item description/product images



### Description

#### Material, version:

Polyamide PA, black.

DIN 6912 screws and DIN 934 nuts electro zinc-plated steel.

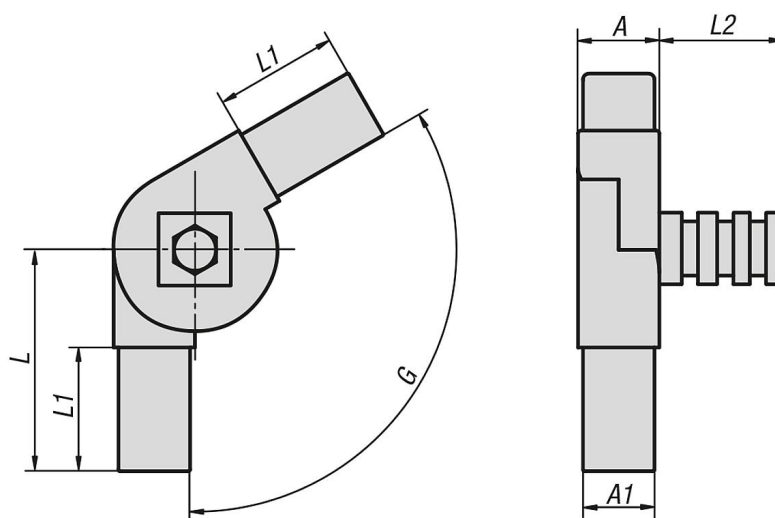
#### Note:

The tube connectors are simply pushed into the appropriate square tubing. They can be dismantled and reused repeatedly. The swivel angle can be seamlessly adjusted. The third spigot can be revolved around its own axis.

#### Accessory:

- Square tubes K0627
- Finned square tubes K0628

### Drawings



### Overview of items

#### Square tube connectors, three-way swivel

Order No.	A	A1	L	L1	L2	G	Suitable for square tubes
K0626.1251511	25	22	68	38	42	0° - 190°	25 x 25 x 1,5
K0626.1251512	25	22	59	38	42	45° - 195°	25 x 25 x 1,5