

Levelling feet plates, plastic, Form A

Item description/product images



Description

Material:

Plates, thermoplastic, glass-fibre reinforced.

Version:

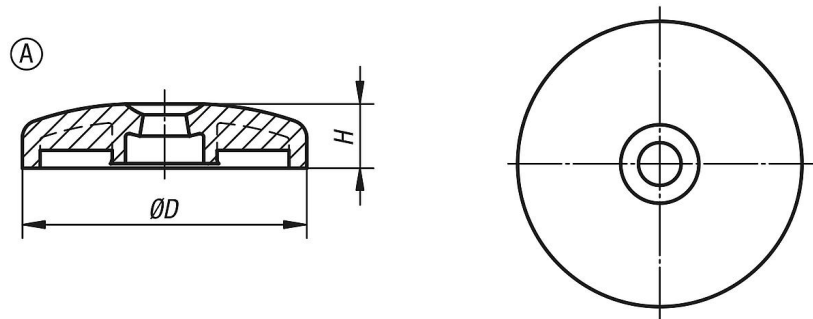
black.

Note:

Levelling feet consist of a plate and a threaded spindle. Any plate can be combined with any threaded spindle.

For matching threaded spindles, see K0427.

Drawings



Overview of items

Levelling feet plates plastic

Order No.	Form	D	H	Load rating max. kN
K0423.1060	A	60	18	12
K0423.1080	A	80	18	12
K0423.1100	A	100	18	12