

Crank handles with safety grip, with keyway

Item description/product images



Description

Material:

Arm and grip black grey thermoplastic.

Version:

Steel parts black oxidised.

Note:

The hub cover is supplied loose.

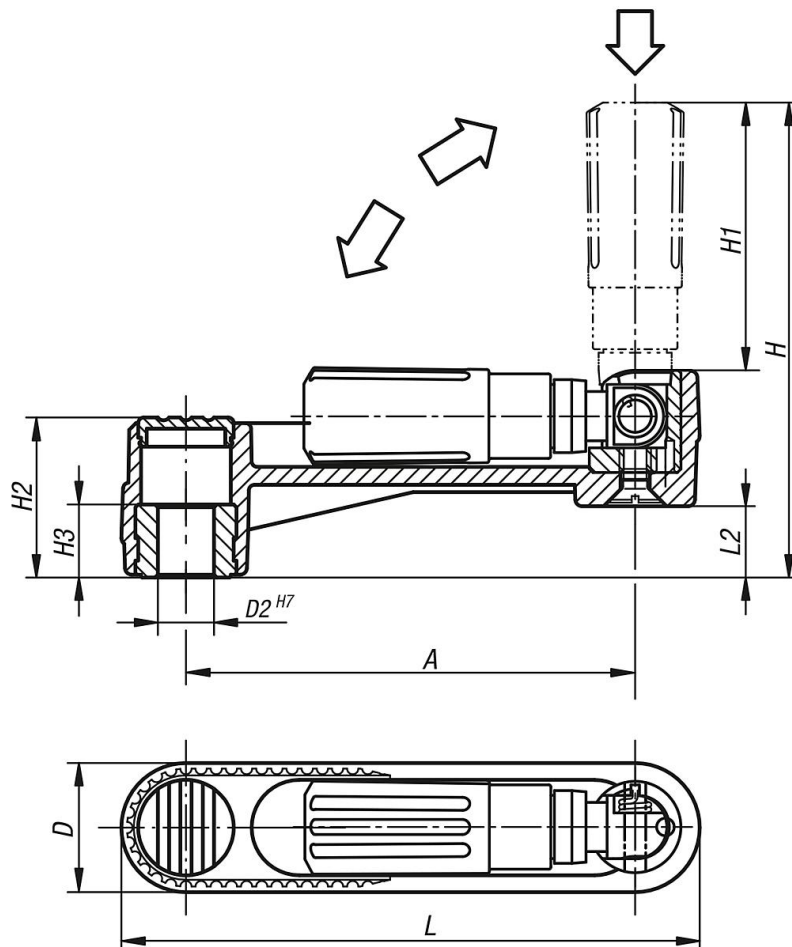
The crank handles can be secured to the shaft by cross-pinning or by parallel key together with a DIN 6912 socket head screw and DIN 7349 washer.

Two actions must be made to bring the safety grip into an operating position:

- Swing the grip out until it stops (90°).
- Push the grip in until it locks.

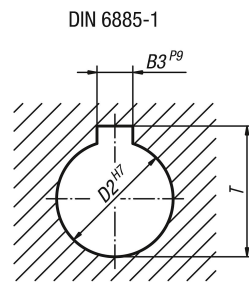
The pushed-in position is the most comfortable for cranking. The grip swings back automatically after releasing.

Drawings



Crank handles with safety grip, with keyway

Drawings



Overview of items

Order No.	Version 1	A	B3	D	D2	H	H1	H2	H3	L	L2	T
K0268.110802	reamed hole with slot	80	2	24	8	84	47,5	29	13	104	13	9
K0268.111003	reamed hole with slot	80	3	24	10	84	47,5	29	13	104	13	11,4
K0268.121003	reamed hole with slot	100	3	29	10	104	58,5	36	13	129	16	11,4
K0268.121204	reamed hole with slot	100	4	29	12	104	58,5	36	13	129	16	13,8
K0268.131204	reamed hole with slot	125	4	36	12	138,5	82	44	18,5	161	19,5	13,8
K0268.131405	reamed hole with slot	125	5	36	14	138,5	82	44	18,5	161	19,5	16,3