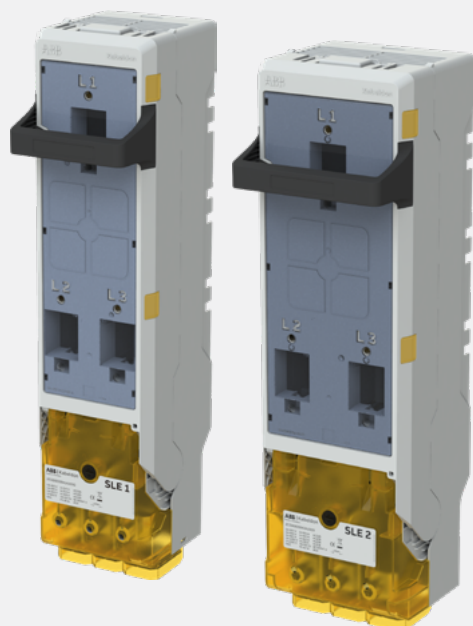


ABB KABELDON

## SLE 1 & 2

### Fuse switch disconnectors



The new SLE fuse switch disconnectors enable seamless integration into the Kabeldon low voltage distribution system, with improved customer values and maintained key features. Protecting the electrical wiring and equipment from damage due to surges and overload conditions and enabling safe manual connection and disconnection of electrical circuits under load, e.g. for maintenance.



#### Safety and protection

Safety is our top priority and SLE is designed to enable safe installation and protection during usage, e.g. by having full IP20 protection, lockable and sealable door to prevent unauthorized access, and the door is also removable to enable a simple and safe change of fuses.



#### Easy to install

SLE has multiple features to simplify installation and handling. Adjustable connectors simplify the installation of cables. Large inspection windows facilitate fuse monitoring. QR codes enable easy access to product documentation. The door is removable to simplify change of fuses. Indicators show when bolts are correctly tightened.



#### Optimum interface

SLE is compatible with old and new Kabeldon systems. The handle is strong and robust and the hinges are improved to enable smooth maneuvering of the door. Torque is also harmonized with the rest of the Kabeldon system.

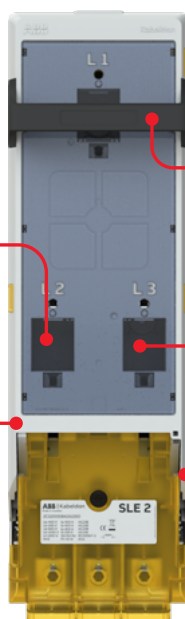
Large inspection windows facilitate fuse monitoring

QR code enables easy access to product documentation

Full IP20 protection to enable safe usage

Improved voltage ratings to 800 V

Improved hinges to enable smoother maneuvering and a better fit of the door

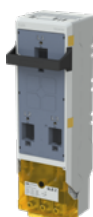


## Fuse switch disconnectors

Designation	Order code	EAN	Utilization category	Busbar width M = 12.5 mm	Dimensions (mm)			Weight (kg)
					Height	Width	Depth	
SLE 1	2CGD000840A1000	7331980014477	AC23B (400 V) 250A AC22B (690 V) 250A AC22B (800 V) 200A	10 M	512	120	172	3.0
SLE 2	2CGD000850A1000	7331980014484	AC23B (400 V) 400A AC22B (690 V) 355A AC22B (800 V) 250A AC21B (1000V) 40A	12 M	512	150	172	3.5



SLE 1



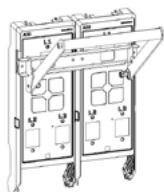
SLE 2

## Accessories

Designation	Order code	EAN	Description	Suitable for	Dimensions (mm)			Weight (kg)
					Height	Width	Depth	
JDDE 1	2CGD001090A1000	7331980014491	Earthing device	SLE 1	512	120	172	2.7
JDDE 2	2CGD001091A1000	7331980014507	Earthing device	SLE 2	512	150	172	3.0
PHE 2	2CGD000860A1000	7331980014514	Parallel handle	SLE 2	360	300	55	1.4



JDDE 1



PHE 2

## Replacement table

Old product	Old order code	Description	New product	New order code
SLD 1	2CGX063050108	Fuse switch disconnectors	SLE 1	2CGD000840A1000
SLD 2	2CGX063050108	Fuse switch disconnectors	SLE 2	2CGD000850A1000
JDDA 1	2CGX063190402	Earthing device	JDDE 1	2CGD001090A1000
JDDA 2	2CGX063190401	Earthing device	JDDE 2	2CGD001091A1000
PHD 2	2CGX063090024	Parallel handle	PHE 2	2CGD000860A1000
PHD 2 SDC	2CGX063090023	Parallel handle	PHE 2	2CGD000860A1000

ABB Electrification Sweden AB  
Kabeldon

[abb.com/lowvoltage](http://abb.com/lowvoltage)

Copyright © 2022 ABB  
All rights reserved.



link to web page