

## Data sheet for SIMOTICS S-1FK2



Figure similar

### MLFB-Ordering data

1FK2204-6AF10-1MA0

Client order no. :

Order no. :

Offer no. :

Remarks :

Item no. :

Consignment no. :

Project :

Basic motor data		Mechanical data	
Motor type	Permanent-magnet synchronous motor, Natural cooling, IP64	Design acc. to Code I	IM B5 (IM V1, IM V3)
Motor type	Compact	Vibration severity grade	Grade A
Static torque	3.20 Nm	Shaft height	40
Static current	3.0 A	Flange size (AB)	80 mm
Maximum torque	9.50 Nm	Centering ring (N)	70 mm
Maximum current	9.9 A	Hole circle (M)	90 mm
Maximum speed	7600 rpm	Screw-on hole (S)	6.5 mm
Rotor moment of inertia	1.690 kgcm <sup>2</sup>	Overall length (LB)	188 mm
Weight	4.3 kg	Diameter of shaft (D)	19 mm
		Length of shaft (E)	40 mm
		Length of flange diagonal (P)	105 mm
		Shaft extension	Fitted key

### Rated data

SINAMICS S210, 3AC 400V

Rated speed	3000 rpm
Rated torque	3.20 Nm
Rated current	3.0 A
Rated power	1.00 kW

### Encoder system

Encoder system	Encoder AM22DQC: Absolute encoder 22 bit + 12 bit multiturn
----------------	---

### Motor connection

Connection type	OCC for S210
Connector size	M17



Figure similar

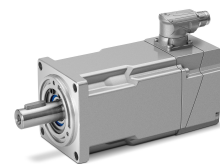


Figure similar

## MLFB-Ordering data

1FK2204-6AF10-1MA0

## Holding brake

Holding torque	3.30 Nm
----------------	---------

Opening time	50 ms
--------------	-------

Closing time	15 ms
--------------	-------

Maximum single switching energy <sup>1)</sup>	270.0 J
---	---------

Service life, operating energy	120000 J
--------------------------------	----------

Holding current	0.2 A
-----------------	-------

Break-induced current for 500 ms <sup>2)</sup>	1.2 A
--	-------

<sup>1)</sup> Up to three consecutive emergency stops and up to 25% of all emergency stops as a Wmax high energy stop possible.

<sup>2)</sup> Typical value for 20°C ambient temperature. At -15°C the break-induced currents can be increased by up to 30%.