



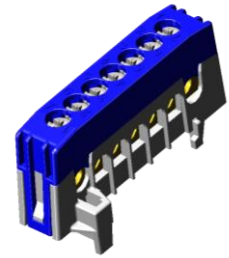
Technical Data Sheet

Date: 2017-12

Page: 1 of 1

Distribution Terminals

Neutral Terminal, blue N7, N12, N15 (-F2)
PE Terminal, green PE7, PE12, PE15 (-F2)
Distribution Terminal, grey A7, A12, A15 (-F2)



N7-F2

Application	Terminal block for mounting onto DIN rails, e.g. for domestic distribution boards and electric meter cabinets
Standards	Connecting devices for low-voltage circuits for household and similar purposes EN 60998-1
Connection	1 ... 16 mm ² rigid / stranded 1 ... 10 mm ² fine stranded with ferrule* screw type terminal, recommended torque: 1,5 Nm * round or squared form, trapeze form max. 6 mm ²
Materials	Terminal block: brass, cross section 6mm by 9 mm Screws: M5, steel zinc plated, passivated (free of Cr-VI) Body: nylon, high impact, flame retardant
Clamping units	7, 12 or 15 acc. to type designation
Mounting	onto DIN rails TS 35/.. acc. to EN 50022 / EN 60715
Nominal current	63 A
Insulating voltage	690 V (panel building, pollution degree 2) 500 V (pollution degree 2) $U_{imp} = 6 \text{ kV}$
IP code	IP 00 type "....-F2": finger proof IP20
Safety	Edges rounded
Environment	All materials and manufacturing processes comply with RoHS regulations
Accessories	-