

Product data

Product code	VB03-0011	STK-code	5203080	EAN-code	6410052030803
Product name	OSCU Al/Cu-lug 300mm²- Ø12				

Technical data

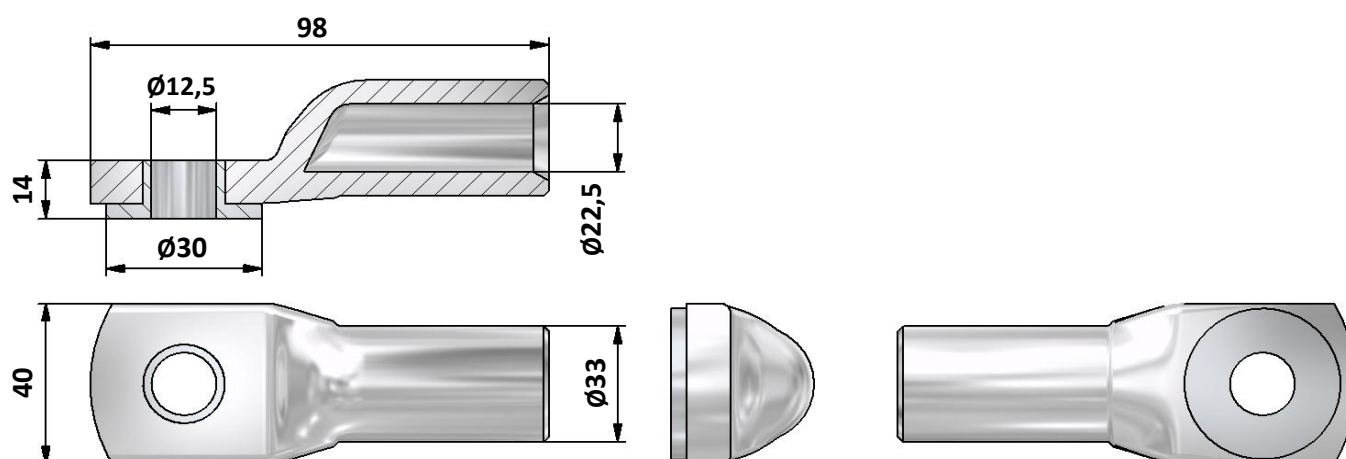
Cable material	Al	
Nominal cross section for cable	300	mm ²
Weight	180	g



Standards	-
Material/ Coating	Unplated Al/Tin plated Cu-ring
Mounting/ Connection	Crimping

Description

OSCU is a crimping-type cable lug for aluminium cables. OSCU connector can be connected to tin-plated, silver-plated and unplated copper busbars. OSCU connector can be used also in damp locations. OSCU connectors are delivered with a conical washer and a flat pressure washer. Connector are also compatible with PEX cables. Installation can be made with tested and approved crimping tools.

Drawing

Package

Package	Bag	pcs/ package	3	Weight [Kg]	0,54
Length [mm]	36	Width [mm]	140	Height [mm]	135