

Data sheet for SIMOTICS S-1FK2

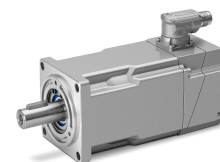


Figure similar

MLFB-Ordering data

1FK2106-4AF11-0MA0

Client order no. :

Order no. :

Offer no. :

Remarks :

Item no. :

Consignment no. :

Project :

Basic motor data		Mechanical data	
Motor type	Permanent-magnet synchronous motor, Natural cooling, IP65	Design acc. to Code I	IM B5 (IM V1, IM V3)
Motor type	High Dynamic	Vibration severity grade	Grade A
Static torque	12.00 Nm	Shaft height	63
Static current	10.7 A	Flange size (AB)	125 mm
Maximum torque	32.50 Nm	Centering ring (N)	110 mm
Maximum current	40.0 A	Hole circle (M)	130 mm
Maximum speed	6000 rpm	Screw-on hole (S)	9.0 mm
Rotor moment of inertia	7.600 kgcm ²	Overall length (LB)	244 mm
Weight	10.6 kg	Diameter of shaft (D)	24 mm
		Length of shaft (E)	50 mm
		Length of flange diagonal (P)	158 mm
		Shaft extension	Plain shaft

Rated data

SINAMICS S210, 3AC 400V

Rated speed	3000 rpm
Rated torque	8.60 Nm
Rated current	8.1 A
Rated power	2.70 kW

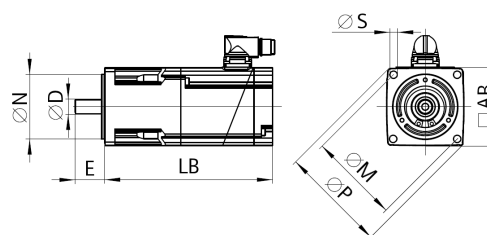


Figure similar

Encoder system

Encoder system	Encoder AM22DQC: Absolute encoder 22 bit + 12 bit multiturn
----------------	---

Motor connection

Connection type	OCC for S210
Connector size	M23

1FK2106-4AF11-0MA0

Figure similar

¹⁾ Up to three consecutive emergency stops and up to 25% of all emergency stops as a Wmax high energy stop possible.