

## Data sheet for SIMOTICS S-1FK2

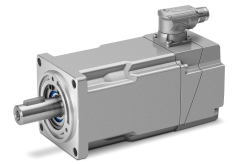


Figure similar

### MLFB-Ordering data

1FK2106-3AF11-0SA0

Client order no. :

Order no. :

Offer no. :

Remarks :

Item no. :

Consignment no. :

Project :

Basic motor data		Mechanical data	
Motor type	Permanent-magnet synchronous motor, Natural cooling, IP65	Design acc. to Code I	IM B5 (IM V1, IM V3)
Motor type	High Dynamic	Vibration severity grade	Grade A
Static torque	9.00 Nm	Shaft height	63
Static current	9.2 A	Flange size (AB)	125 mm
Maximum torque	24.50 Nm	Centering ring (N)	110 mm
Maximum current	36.0 A	Hole circle (M)	130 mm
Maximum speed	6000 rpm	Screw-on hole (S)	9.0 mm
Rotor moment of inertia	6.300 kgcm <sup>2</sup>	Overall length (LB)	225 mm
Weight	9.0 kg	Diameter of shaft (D)	24 mm
		Length of shaft (E)	50 mm
		Length of flange diagonal (P)	158 mm
		Shaft extension	Plain shaft

### Rated data

SINAMICS S210, 3AC 400V

Rated speed	3000 rpm
Rated torque	7.30 Nm
Rated current	7.9 A
Rated power	2.30 kW

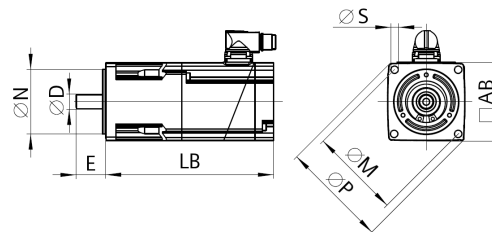


Figure similar

### Encoder system

Encoder system	Encoder AS22DQC: Absolute encoder single turn 22 bit
----------------	------------------------------------------------------

### Motor connection

Connection type	OCC for S210
Connector size	M23

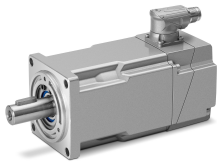


Figure similar

MLFB-Ordering data                    1FK2106-3AF11-0SA0

Holding brake	
Holding torque	13.00 Nm
Opening time	70 ms
Closing time	30 ms
Maximum single switching energy <sup>1)</sup>	1550.0 J
Service life, operating energy	774000 J
Holding current	0.35 A
Break-induced current for 500 ms <sup>2)</sup>	1.1 A

<sup>1)</sup> Up to three consecutive emergency stops and up to 25% of all emergency stops as a Wmax high energy stop possible.

<sup>2)</sup> Typcial value for 20°C ambient temperature. At -15°C the break-induced currents can be increased by up to 30%.