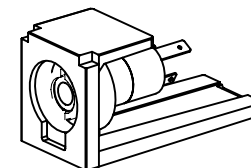
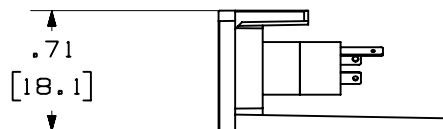
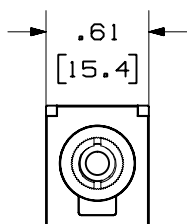




Technical drawing of a component showing a dimension of 1.37 [34.8]. The drawing includes a cross-section view of a cylindrical part with a central hole and a smaller hole. The dimension is indicated by a vertical arrow pointing upwards from the bottom surface to the top surface of the central hole.

PANDUIT P/N	WEIGHT
CM35MSS**	.09 LB/10 PCS (42.5 g/10 PCS)

1. SEE CURRENT CATALOG FOR ADDITIONAL PART NUMBER SUFFIXES TO INDICATE COLOR AND OR PACKAGE QUANTITY.
2. SEE CATALOG FOR COMPLETE LIST OF PARTS APPLICABLE FOR USE WITH THIS PART.
3. DIMENSIONS IN PARENTHESES ARE IN METRIC.

4. PART INCLUDES:
 1- MODULE BASE
 1- 3.5mm (1/8") SOLDER TYPE CONNECTOR
 (ASSEMBLED TO MODULE BASE)



MODEL FILENAME		MO1611AA_CMP35_00.PRT	SIZE A
DRAWING FILENAME		MO1611AA_DC_00B.PRT	
MINI-COM 3.5mm(1/8") HEAD PHONE JACK MODULE SOLDER TYPE CUSTOMER DRAWING			
 PANDUIT ™ CORP. TINTON PARK, ILL 60477		I.I. NUMBER N/A	
 THIRD ANGLE PROJECTION		PRODUCT SPEC N/A	
ALL DIMENSIONS ARE GIVEN IN INCHES, UNLESS OTHERWISE SPECIFIED, DIMENSIONAL TOLERANCES ARE: (.X) ± (.XXX) ± .010(.3) (.XX) ±.03(.8) ANGLES ±		WORK INSTRUCTION N/A	
DRAWN BY JsP		SCALE NONE	
DATE 4-30-03		PART NO. CM35MSS**	
CHK'D PBD		DRAWING NO. 01611-03	
MATERIAL: MODULE: ABS CONNECTOR: PBT			