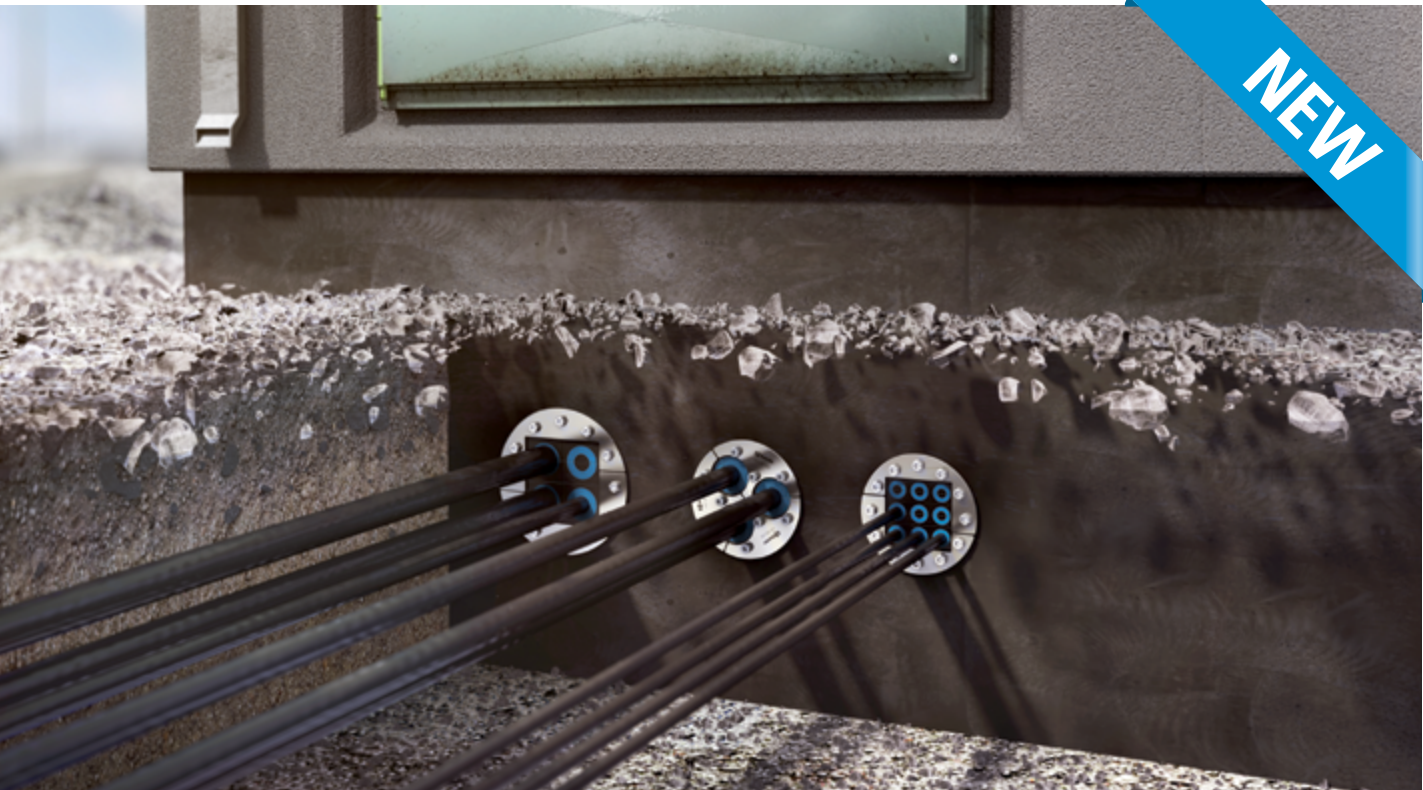


NEW

Roxtec UG™ solutions

– CABLE ENTRY SEALS FOR UNDERGROUND APPLICATIONS IN THE POWER INDUSTRY

Long-lasting barrier

Roxtec UG solutions are designed for underground applications where there is a need for sealing against constant water pressure. While other Roxtec seals also take care of the fire rating of your building structure, this product family is ideal for power cables entering via foundations.

Excellent protection

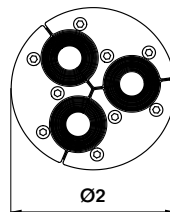
The products are specifically developed to be used in underground applications where fire is not an issue. The seals are designed to be resistant to constant as well as catastrophic water pressure. You can use them to eliminate flooding and prevent humidity from damaging equipment.

WHY USE ROXTEC?

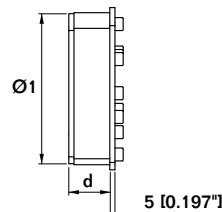
- Easy to design in and install
- Corrosion and rodent resistant
- Eliminate flooding and prevent humidity from damaging equipment
- Multidiameter™ by Roxtec – adapts through modules with removable layers
- Pull-out tests performed

Roxtec H3 UG™ seal

The openable Roxtec H3 UG seal is ready for direct routing of cables in trefoil formations. Seals are IP68* rated.



Note: WOC=Without cores

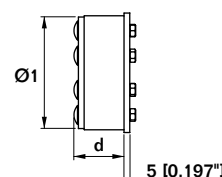
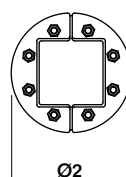
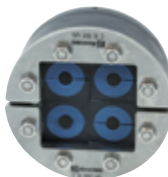


Stainless steel

Article	Number of cables	For cable/pipe Ø (mm/")	For aperture dimension Ø (mm/")	d (mm/")	Ø1 (mm/")	Ø2 (mm/")	Weight (kg) (lb)	Art. no
H3-150 UG	3	24-52/0.945-2.047	150-152/5.906-5.984	40/1.575	150/5.906	160/6.299	1.8/4.1	117843
H3-150 UG WOC	3	24-52/0.945-2.047	150-152/5.906-5.984	40/1.575	150/5.906	160/6.299	1.6/3.4	108586
H3-200 UG	3	48-68/1.890-2.677	200-202/7.874-7.953	65/2.559	200/7.874	210/8.268	4.3/9.5	117842
H3-200 UG WOC	3	48-68/1.890-2.677	200-202/7.874-7.953	65/2.559	200/7.874	210/8.268	3.8/8.4	108697

Roxtec C R UG™ and R UG™ kits

The frames are used with UG modules that are easy to adapt to cables and pipes of different sizes. The frames are IP68* rated.



Stainless steel

Article	For aperture dimension Ø (mm/")	Multidiameter range and number of cables					Art. no
		0+4-13 mm 0+0.157-0.512" (RM/CM 20 UG)	0+4-13 mm 0+0.157-0.512" (RM/CM20w40UG)	0+10-23.5 mm 0+0.394-0.925" (RM/CM 30 UG)	0+9.5-31 mm 0+0.374-1.220" (RM/CM 40 UG)	0+24-52 mm 0+0.945-2.047" (RM 60 UG)	
C R 100/4 UG	100-102/3.937-4.016			4 Cables/Pipes			117844
C R 100/6 UG	100-102/3.937-4.016	1 Cables/Pipes	4 Cables/Pipes		1 Cables/Pipes		117845
R 150/6 UG	150-152/5.906-5.984			5 Cables/Pipes		1 Cables/Pipes	120859
R 150/9 UG	150-152/5.906-5.984			9 Cables/Pipes			117821
R 200/4 UG	200-202/7.874-7.953					4 Cables/Pipes	117822
R 200/7 UG	200-202/7.874-7.953			4 Cables/Pipes		3 Cables/Pipes	117854
R 200/15 UG	200-202/7.874-7.953		8 Cables/Pipes		7 Cables/Pipes		117855

Note: The black coloured UG Modules have their own range of Multidiameter™.

*1 bar catastrophic and 0,3 bar constant water pressure, equivalent to a 3m water column (head of water).



Roxtec International AB
Box 540, 371 23 Karlskrona, SWEDEN
PHONE +46 455 36 67 00, FAX +46 455 820 12
EMAIL info@roxtec.com, www.roxtec.com