

A

B

C

D

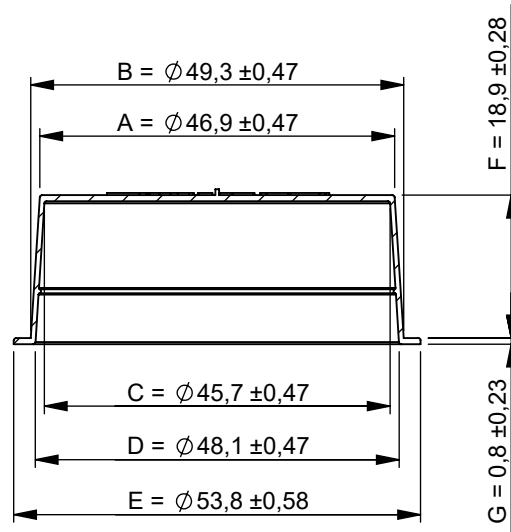
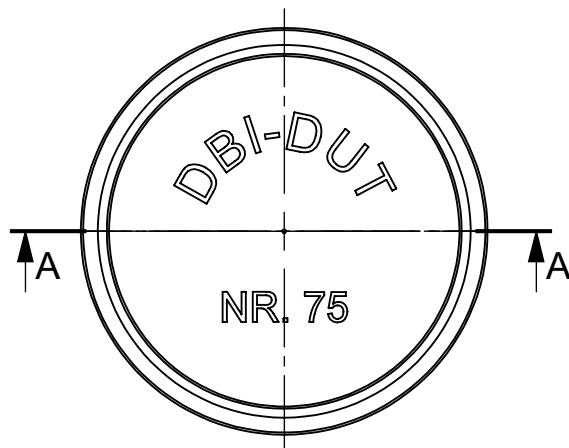
E

F

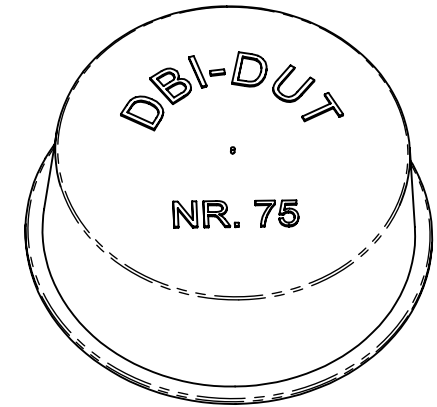
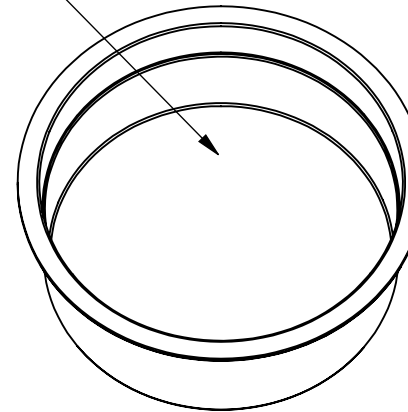
G

REVISIONS

REV.	DESCRIPTION	DATE	AUTHOR
1	Drawing is according to measurement report per 15/4-02.	07-04-2005	KP
2	Measure B is adjusted from 49,00 to 49,30. Drawing is according to measurement report per 16-06-05.	16-06-2005	KV
3	Drawing is according to measurement report per 24-11-2006. Part number changed from 410075 to NA0490A-AA.	28-11-2007	KV
4	Drawing is according to measurement report per 13-02-2009.	19-03-2009	KV
5	Part weight corrected from 3,6g to 3,4g.	18-02-2011	KV
6	Drawing is according to measurement report per 10-05-2012.	14-05-2012	KV
7	Part weight adjusted from 3,4 to 3,3 g. Drawing is now in accordance with measurement report per 07-10-2016.	13-10-2016	KV

SECTION A-A
SCALE 1 : 1

Cavity number



Actual size

Comment:
Drawing is according to the latest
measurement report.

Comment:
Drawing is valid for caps both with
(NA0490L-AA) and without vent hole
(NA0490A-AA).

Sheet: A4	Scale: 2:1	DBI A/S Project No: 02529	Drawing: NA0490A-AA
Material: PELD	Colour: All	DBI A/S Product No: NA0490A-AA	
Part Weight: 3,3 g	Part Surface Area: 100,09 cm ²	Product Name: Conical cap 0490	
DBI plastics Protect your business		Dimensions are given in mm. Dimensions without tolerances according to DS 812 / DIN16901	
		This drawing belongs to DBI Plastics A/S and may not be used or shown without permission.	