

# PRODUKTFAMILIE DATABLAD

## LUMILUX T5 FC

Cirkulære lysstofrør 16 mm, med 2GX13 sokkel



### APPLIKATIONSOMRÅDER

- Offentlige bygninger
- Kontorer
- Restauranter
- Industri
- Butikker
- Supermarkeder og stormagasiner
- Hoteller

### PRODUKTFORDELE

- Ekstremt økonomisk
- God lyskvalitet
- Fremragende lysstrøm
- Fremragende ensartet belysning uden skygger
- God gennemsnitlig levetid (med OSRAM ECG)

### PRODUKTEGENSKABER

- God farvegengivelsesgruppe: 1B ( $R_a$ : 80...89)
- Dæmpbar (fra 100...1 % med QT<sub>i</sub> DALI/DIM ECG)
- Rundt lysstofrør med enkelt ende
- Rørdiameter: 16,0 mm



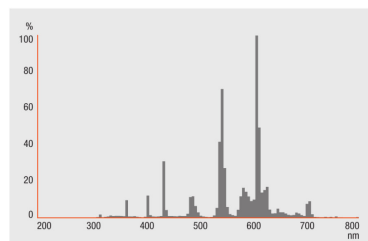
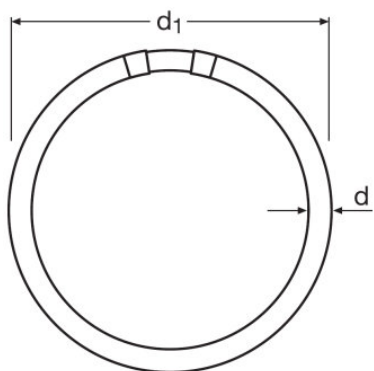
TEKNISKE DATA

| Produktbeskrivelse          | Elektriske Data     | Fotometriske data         |                 |                           |                       |                   |         |                           | Dimensioner     |  | Temperaturer og driftsbetingelser | Levetid              |
|-----------------------------|---------------------|---------------------------|-----------------|---------------------------|-----------------------|-------------------|---------|---------------------------|-----------------|--|-----------------------------------|----------------------|
|                             | Nominel wattforbrug | Farvegen- givelsesin- dex | Lumen ved 25 °C | Nominel farvetemper- atur | Farvetemperat- urer   | Farvetemper- atur | Lumen   | Farvegen- givelsesin- dex | Rør dia mete- r | Længde inkl. fatn. ex. fatn.ben/tilslut. | Målt Ta for maksim al lysstrøm    | Service levetid      |
| FC 22 W/2700K <sup>1)</sup> | 22,00 W             | ≥80                       | 1900 lm         | 2700 K                    | LUMILUX INTERNA       | 2700 K            | 1900 lm | ≥80                       | 16 mm           | 225,00 mm                                | 35,0 °C                           | 8000 h <sup>2)</sup> |
| FC 22 W/3000K <sup>1)</sup> | 22,00 W             | ≥80                       | 1900 lm         | 3000 K                    | LUMILUX varmt hvidt   | 3000 K            | 1900 lm | ≥80                       | 16 mm           | 225,00 mm                                | 35,0 °C                           | 8000 h <sup>2)</sup> |
| FC 22 W/4000K <sup>1)</sup> | 22,00 W             | ≥80                       | 1900 lm         | 4000 K                    | LUMILUX Cool White    | 4000 K            | 1900 lm | ≥80                       | 16 mm           | 225,00 mm                                | 35,0 °C                           | 8000 h <sup>2)</sup> |
| FC 22 W/6500K <sup>1)</sup> | 22,00 W             | ≥80                       | 1800 lm         | 6500 K                    | LUMILUX koldt dagslys | 6500 K            | 1800 lm | ≥80                       | 16 mm           | 225,00 mm                                | 35,0 °C                           | 8000 h <sup>2)</sup> |
| FC 40 W/2700K <sup>1)</sup> | 40,00 W             | ≥80                       | 3400 lm         | 2700 K                    | LUMILUX INTERNA       | 2700 K            | 3400 lm | ≥80                       | 16 mm           | 300,00 mm                                | 35,0 °C                           | 8000 h <sup>2)</sup> |
| FC 40 W/3000K <sup>1)</sup> | 40,00 W             | ≥80                       | 3400 lm         | 3000 K                    | LUMILUX varmt hvidt   | 3000 K            | 3400 lm | ≥80                       | 16 mm           | 300,00 mm                                | 35,0 °C                           | 8000 h <sup>2)</sup> |
| FC 40 W/4000K <sup>1)</sup> | 40,00 W             | ≥80                       | 3400 lm         | 4000 K                    | LUMILUX koldt hvidt   | 4000 K            | 3400 lm | ≥80                       | 16 mm           | 300,00 mm                                | 35,0 °C                           | 8000 h <sup>2)</sup> |
| FC 40 W/6500K <sup>1)</sup> | 40,00 W             | ≥80                       | 3300 lm         | 6500 K                    | LUMILUX Cool Daylight | 6500 K            | 3000 lm | ≥80                       | 16 mm           | 300,00 mm                                | 35,0 °C                           | 8000 h <sup>2)</sup> |
| FC 55 W/2700K <sup>1)</sup> | 55,00 W             | ≥80                       | 4200 lm         | 2700 K                    | LUMILUX INTERNA       | 2700 K            | 4200 lm | ≥80                       | 16 mm           | 300,00 mm                                | 35,0 °C                           | 8000 h <sup>2)</sup> |
| FC 55 W/3000K <sup>1)</sup> | 55,00 W             | ≥80                       | 4200 lm         | 3000 K                    | LUMILUX varmt hvidt   | 3000 K            | 4200 lm | ≥80                       | 16 mm           | 300,00 mm                                | 35,0 °C                           | 8000 h <sup>2)</sup> |
| FC 55 W/4000K <sup>1)</sup> | 55,00 W             | ≥80                       | 4200 lm         | 4000 K                    | LUMILUX koldt hvidt   | 4000 K            | 4200 lm | ≥80                       | 16 mm           | 300,00 mm                                | 35,0 °C                           | 8000 h <sup>2)</sup> |
| FC 55 W/6500K <sup>1)</sup> | 55,00 W             | ≥80                       | 3990 lm         | 6500 K                    | LUMILUX Cool Daylight | 6500 K            | 3990 lm | ≥80                       | 16 mm           | 300,00 mm                                | 35,0 °C                           | 8000 h <sup>2)</sup> |

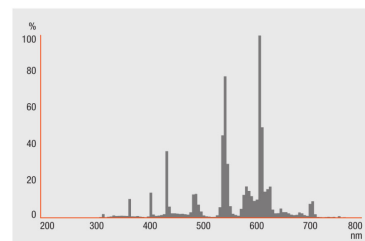
| Produktbeskrivelse          | Levetid               | Generel Beskrivelse                |  | Godkendelse og Standarder |               |
|-----------------------------|-----------------------|------------------------------------|--|---------------------------|---------------|
|                             |                       | Sokkel<br>(standard<br>betegnelse) | Korrekt<br>bortskaf<br>felse jf.<br>WEEE | Energiklasse              | Energiforbrug |
| FC 22 W/2700K <sup>1)</sup> | 12000 h <sup>2)</sup> | 2GX13                              | Ja                                       | A                         | 25 kWh/1000h  |
| FC 22 W/3000K <sup>1)</sup> | 12000 h <sup>2)</sup> | 2GX13                              | Ja                                       | A                         | 25 kWh/1000h  |
| FC 22 W/4000K <sup>1)</sup> | 12000 h <sup>2)</sup> | 2GX13                              | Ja                                       | A                         | 25 kWh/1000h  |
| FC 22 W/6500K <sup>1)</sup> | 12000 h <sup>2)</sup> | 2GX13                              | Ja                                       | A                         | 25 kWh/1000h  |
| FC 40 W/2700K <sup>1)</sup> | 12000 h <sup>2)</sup> | 2GX13                              | Ja                                       | A+                        | 44 kWh/1000h  |
| FC 40 W/3000K <sup>1)</sup> | 12000 h <sup>2)</sup> | 2GX13                              | Ja                                       | A+                        | 44 kWh/1000h  |
| FC 40 W/4000K <sup>1)</sup> | 12000 h <sup>2)</sup> | 2GX13                              | Ja                                       | A+                        | 44 kWh/1000h  |
| FC 40 W/6500K <sup>1)</sup> | 12000 h <sup>2)</sup> | 2GX13                              | Ja                                       | A+                        | 44 kWh/1000h  |
| FC 55 W/2700K <sup>1)</sup> | 12000 h <sup>2)</sup> | 2GX13                              | Ja                                       | A                         | 61 kWh/1000h  |
| FC 55 W/3000K <sup>1)</sup> | 12000 h <sup>2)</sup> | 2GX13                              | Ja                                       | A                         | 61 kWh/1000h  |
| FC 55 W/4000K <sup>1)</sup> | 12000 h <sup>2)</sup> | 2GX13                              | Ja                                       | A                         | 61 kWh/1000h  |
| FC 55 W/6500K <sup>1)</sup> | 12000 h <sup>2)</sup> | 2GX13                              | Ja                                       | A                         | 61 kWh/1000h  |

<sup>1)</sup> Kan kun bruges til elektronisk forkobling

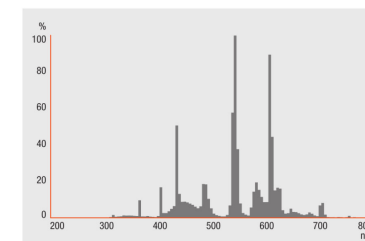
<sup>2)</sup> Med forvarme EKG



FC 22 W/2700K, FC 40 W/2700K, FC 55 W/2700K

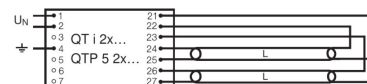
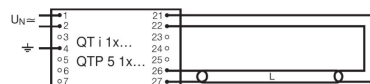
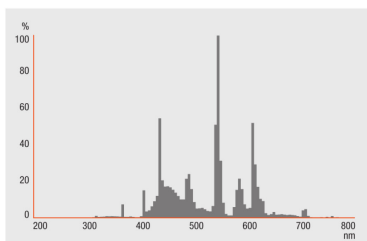


FC 22 W/3000K, FC 40 W/3000K, FC 55 W/3000K



FC 22 W/4000K, FC 40 W/4000K, FC 55 W/4000K

FC 22 W/2700K, FC 22 W/3000K, FC 22 W/4000K, FC 22 W/6500K, FC 40 W/2700K, FC 40 W/3000K, FC 40 W/4000K, FC 40 W/6500K, FC 55 W/2700K, FC 55 W/3000K, FC 55 W/4000K, FC 55 W/6500K



FC 22 W/6500K, FC 40 W/6500K, FC 55 W/6500K

FC 22 W/2700K, FC 22 W/3000K, FC 22 W/4000K, FC 22 W/6500K, FC 40 W/2700K, FC 40 W/3000K, FC 40 W/4000K, FC 40 W/6500K, FC 55 W/2700K, FC 55 W/3000K, FC 55 W/4000K, FC 55 W/6500K

FC 22 W/2700K, FC 22 W/3000K, FC 22 W/4000K, FC 22 W/6500K, FC 40 W/2700K, FC 40 W/3000K, FC 40 W/4000K, FC 40 W/6500K, FC 55 W/2700K, FC 55 W/3000K, FC 55 W/4000K, FC 55 W/6500K

### SYSTEM GARANTI

OSRAM System+ garanti i kombination med OSRAM ECG'er

### UDSTYR/TILBEHØR

- Udelukkende til brug med elektroniske forkoblinger

### SIKKERHEDS RÅDGIVNING

Hvis en lampe går i stykker: [www.ledvance.com/brokenlamp](http://www.ledvance.com/brokenlamp)

## APPLIKATIONS RÅD

For mere detaljeret information og grafikker venligst se produktdatablad

## LOGISTIK DATA

| Produktkode   | Pakningsstørrelse (antal/enhed) | Dimensioner (længde x bredde x højde) | Bruttovægt | Volumen               |
|---------------|---------------------------------|---------------------------------------|------------|-----------------------|
| 4050300646244 | Shipping carton box<br>12       | 375 mm x 245 mm x 253 mm              | 1865,00 g  | 23.24 dm <sup>3</sup> |
| 4050300528496 | Shipping carton box<br>12       | 375 mm x 245 mm x 253 mm              | 1865,00 g  | 23.24 dm <sup>3</sup> |
| 4050300528472 | Shipping carton box<br>12       | 375 mm x 245 mm x 253 mm              | 1865,00 g  | 23.24 dm <sup>3</sup> |
| 4050300528458 | Shipping carton box<br>12       | 375 mm x 245 mm x 253 mm              | 1865,00 g  | 23.24 dm <sup>3</sup> |
| 4050300646268 | Shipping carton box<br>12       | 368 mm x 330 mm x 319 mm              | 2727,00 g  | 38.74 dm <sup>3</sup> |
| 4050300528557 | Shipping carton box<br>12       | 375 mm x 320 mm x 328 mm              | 2787,00 g  | 39.36 dm <sup>3</sup> |
| 4050300528533 | Shipping carton box<br>12       | 375 mm x 320 mm x 328 mm              | 2787,00 g  | 39.36 dm <sup>3</sup> |
| 4050300528519 | Shipping carton box<br>12       | 375 mm x 320 mm x 328 mm              | 2787,00 g  | 39.36 dm <sup>3</sup> |
| 4050300646282 | Shipping carton box<br>12       | 375 mm x 320 mm x 328 mm              | 2787,00 g  | 39.36 dm <sup>3</sup> |
| 4050300528618 | Shipping carton box<br>12       | 375 mm x 320 mm x 328 mm              | 2787,00 g  | 39.36 dm <sup>3</sup> |
| 4050300528595 | Shipping carton box<br>12       | 237 mm x 320 mm x 328 mm              | 1713,60 g  | 24.88 dm <sup>3</sup> |
| 4050300528571 | Shipping carton box<br>12       | 375 mm x 320 mm x 328 mm              | 2695,00 g  | 39.36 dm <sup>3</sup> |

Den nævnte produktkode beskriver mindste ordremængde, der kan bestilles. En leveringsenhed kan indholde et eller flere enkelte produkter. Ved ordreafgivelse bestiller man én eller flere leveringsenheder.

---

## REFERENCER/LINKS

Du kan finde flere detaljer om systemgaranti og garantibetingelserne, hvis du besøger

- ▶ [www.ledvance.com/system-guarantee](http://www.ledvance.com/system-guarantee)

---

## ANSVARSKRIVELSE

Ret til ændringer uden varsel. Fejl og undladelser undtaget. Sørg altid for at bruge den seneste udgivelse.