

Product data

| | | | | | |
|--------------|---|----------|----------------|----------|----------------------|
| Product code | VB03-0006 | STK-code | 5203055 | EAN-code | 6410052030551 |
| Product name | OSCU Al/Cu-lug 95mm²- Ø12 | | | | |

Technical data

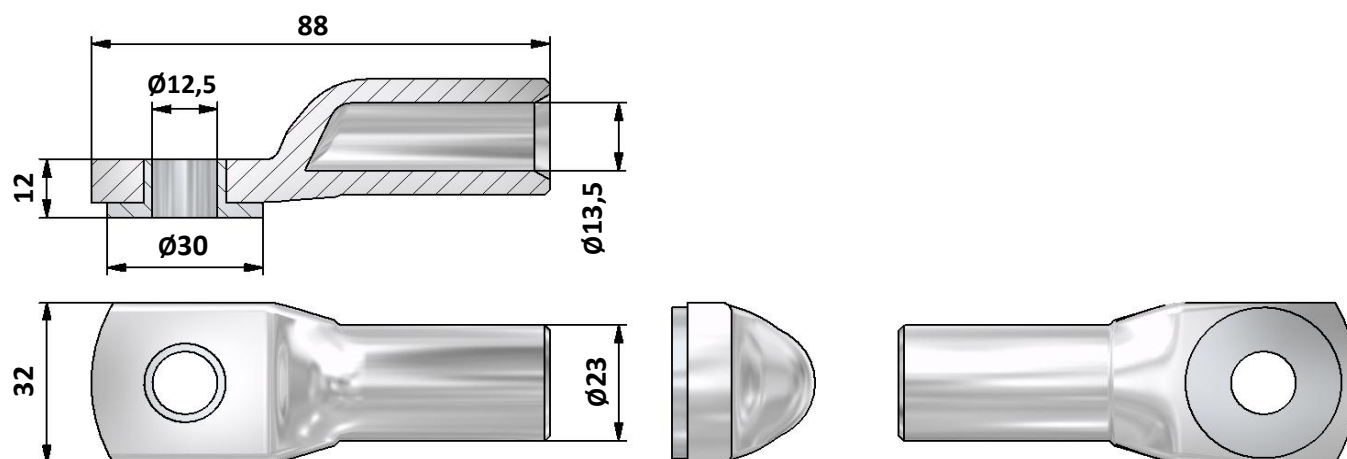
| | | |
|---------------------------------|------------|-----------------|
| Cable material | Al | |
| Nominal cross section for cable | 95 | mm ² |
| Weight | 120 | g |



| | |
|----------------------|---------------------------------------|
| Standards | - |
| Material/ Coating | Unplated Al/Tin plated Cu-ring |
| Mounting/ Connection | Crimping |

Description

OSCU is a crimping-type cable lug for aluminium cables. OSCU connector can be connected to tin-plated, silver-plated and unplated copper busbars. OSCU connector can be used also in damp locations. OSCU connectors are delivered with a conical washer and a flat pressure washer. Connector are also compatible with PEX cables. Installation can be made with tested and approved crimping tools.

Drawing

Package

| | | | | | |
|-------------|------------|--------------|------------|-------------|-------------|
| Package | Bag | pcs/ package | 3 | Weight [Kg] | 0,36 |
| Length [mm] | 27 | Width [mm] | 140 | Height [mm] | 125 |