

Article No. : 1FK2208-5AC10-0MB0

Client order no. :  
Order no. :  
Offer no. :  
Remarks :

Item no. :  
Consignment no. :  
Project :

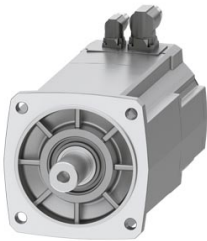


Figure similar

Basic motor data	
Motor type	Permanent-magnet synchronous motor, Natural cooling, IP64
Motor type	Compact
Static torque	27.00 Nm
Static current	14.6 A
Maximum torque	80.00 Nm
Maximum current	51.5 A
Maximum speed	4,700 rpm
Rotor moment of inertia	53.6000 kgcm <sup>2</sup>
Weight	19.3 kg

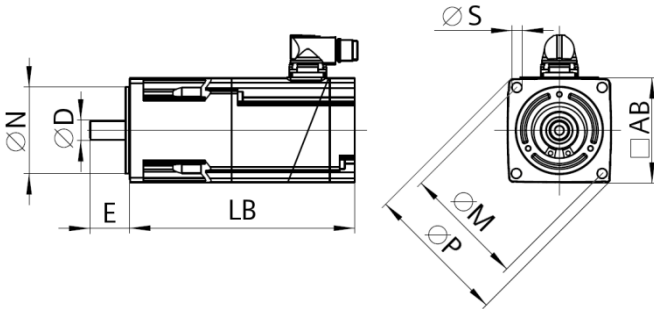
Rated data	
SINAMICS S120, BLM/SLM 3AC 400V	
Rated speed	2,000 rpm
Rated torque	19.10 Nm
Rated current	10.8 A
Rated power	4.00 kW

Encoder system	
Encoder system	Encoder AM22DQC: Absolute encoder 22 bit + 12 bit multiturn

Motor connection	
Connection type	Double cable connection for S120
Connector size	M23

Mechanical data	
Design acc. to Code I	IM B5 (IM V1, IM V3)
Vibration severity grade	Grade A
Shaft height	80
Flange size (AB)	155 mm
Centering ring (N)	130 mm
Hole circle (M)	165 mm
Screw-on hole (S)	11.0 mm
Overall length (LB)	276 mm
Diameter of shaft (D)	32 mm
Length of shaft (E)	58 mm
Length of flange diagonal (P)	202 mm
Shaft end	Plain shaft

Color of the housing  
Standard (Anthracite, similar to RAL 7016)



Holding brake	
Holding torque	32.00 Nm
Average dynamic torque	17.00 Nm
Opening time	200 ms
Closing time	60 ms
Maximum single switching energy <sup>1)</sup>	4,800 J
Service life, operating energy	2,400,000 J
Rated current <sup>2)</sup>	0.9 A

<sup>1)</sup>Up to three consecutive emergency stops and up to 25% of all emergency stops as a Wmax high energy stop possible.  
<sup>2)</sup>Typical value for 20°C ambient temperature. At -15°C the break-induced currents can be increased by up to 30%.