

Article No. : 1FK2208-3AC10-0SB0

Client order no. :
Order no. :
Offer no. :
Remarks :

Item no. :
Consignment no. :
Project :

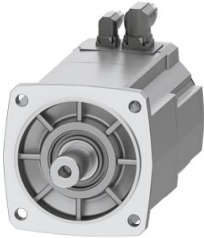


Figure similar

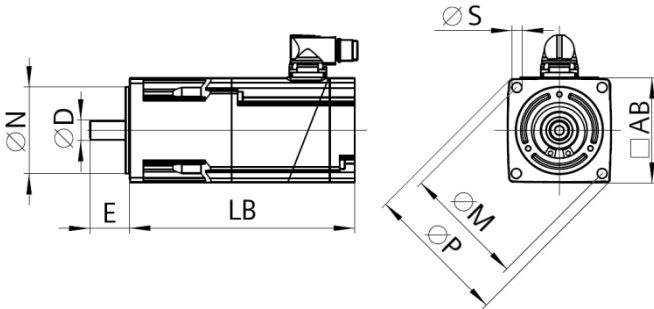
Basic motor data	
Motor type	Permanent-magnet synchronous motor, Natural cooling, IP64
Motor type	Compact
Static torque	18.00 Nm
Static current	8.4 A
Maximum torque	51.00 Nm
Maximum current	29.5 A
Maximum speed	4,100 rpm
Rotor moment of inertia	32.6000 kgcm ²
Weight	14.6 kg

Rated data	
SINAMICS S120, BLM/SLM 3AC 400V	
Rated speed	2,000 rpm
Rated torque	14.50 Nm
Rated current	7.0 A
Rated power	3.05 kW

Encoder system	
Encoder system	Encoder AS22DQC: Absolute encoder single turn 22 bit

Motor connection	
Connection type	Double cable connection for S120
Connector size	M23

Mechanical data	
Design acc. to Code I	IM B5 (IM V1, IM V3)
Vibration severity grade	Grade A
Shaft height	80
Flange size (AB)	155 mm
Centering ring (N)	130 mm
Hole circle (M)	165 mm
Screw-on hole (S)	11.0 mm
Overall length (LB)	236 mm
Diameter of shaft (D)	32 mm
Length of shaft (E)	58 mm
Length of flange diagonal (P)	200 mm
Shaft end	Plain shaft
Color of the housing	Standard (Anthracite, similar to RAL 7016)



Holding brake	
Holding torque	19.00 Nm
Average dynamic torque	12.00 Nm
Opening time	100 ms
Closing time	40 ms
Maximum single switching energy ¹⁾	2,000 J
Service life, operating energy	1,800,000 J
Rated current ²⁾	0.8 A

¹⁾Up to three consecutive emergency stops and up to 25% of all emergency stops as a Wmax high energy stop possible.
²⁾Typical value for 20°C ambient temperature. At -15°C the break-induced currents can be increased by up to 30%.