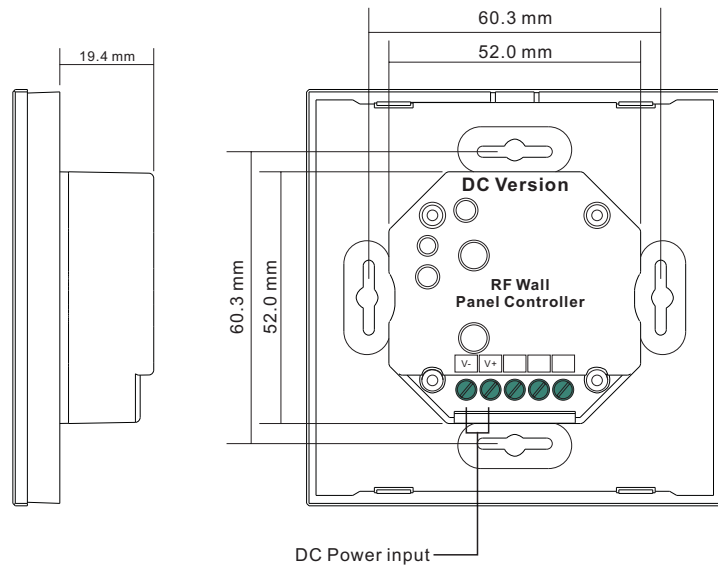
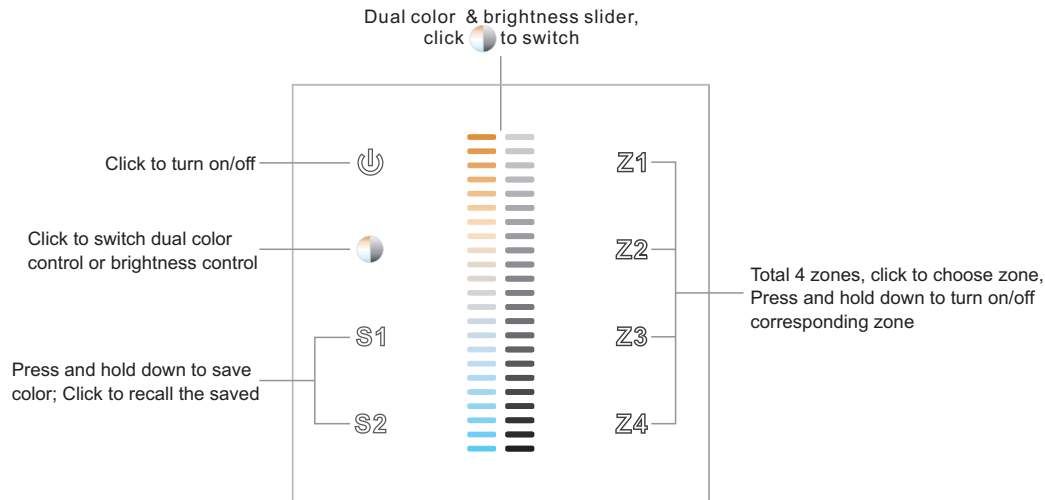


RF Dual Color Wall Mounted Controller

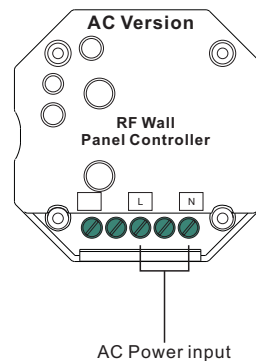


Important: Read All Instructions Prior to Installation

Function introduction



Back side



AC Power input

Product Data

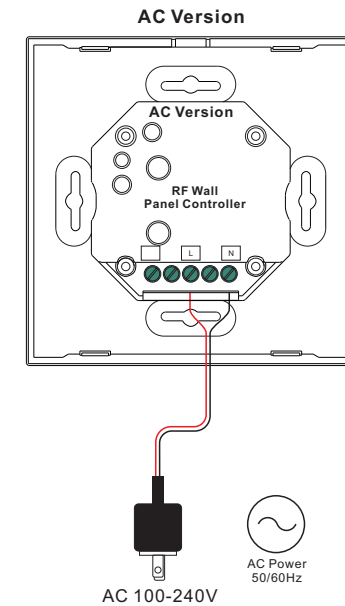
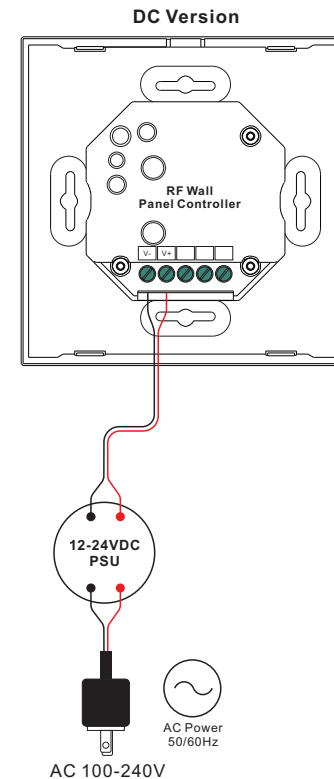
| | DC Version | AC Version |
|-----------------------|--------------|--------------|
| Output Signal | RF signal | RF signal |
| Power Supply | 12-24VDC | 100-240VAC |
| Power consumption | 20 mA | 20 mA |
| Operating temperature | 0-40°C | 0-40°C |
| Relative humidity | 8% to 80% | 8% to 80% |
| Dimensions | 86x86x29.1mm | 86x86x29.1mm |

- Touch sensitive
- Glass interface(white & black)
- Compatible with all universal series RF receivers, radio frequency: 869.5/434MHz
- Control CCT color
- Control 4 zone of RF receiver synchronously and separately
- Waterproof grade: IP20


Safety & Warnings

- DO NOT install with power applied to device.
- DO NOT expose the device to moisture.

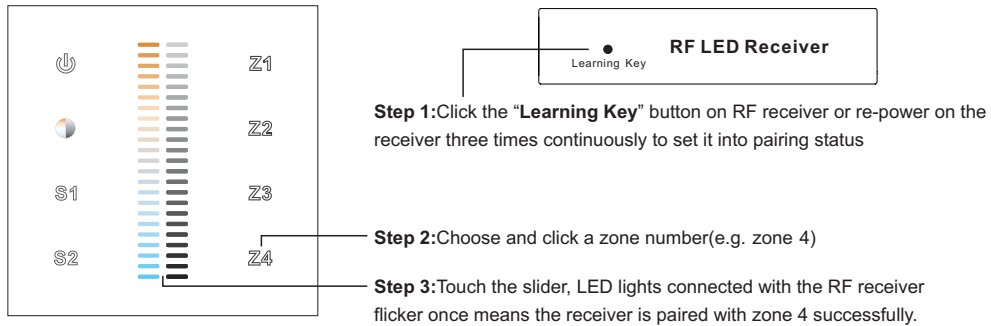
Wiring diagram



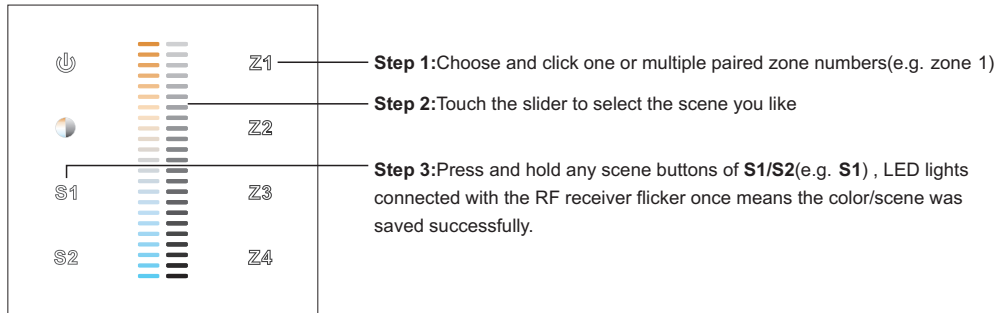
Operation

1. Do wiring the wall panel & RF receiver according to wiring diagram (please refer to the instruction of RF receiver that you would like to pair with)
2. Power on, then touch the button  to turn on the controller, indicator of the controller turned blue

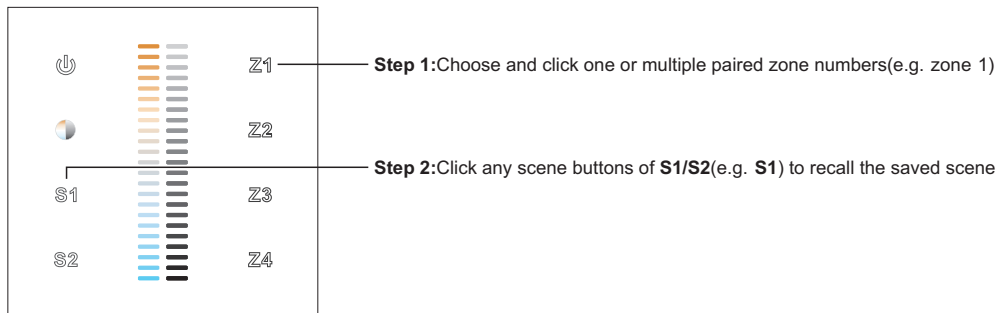
Pair with RF receiver



Save color/scene/mode



Recall the saved colors/scenes



Installation

