

Qty.	Description
------	-------------

1	UNILIFT APG.40.10.A3
---	-----------------------------



Note! Product picture may differ from actual product

Product No.: On request

The UNILIFT APG pump is a single-stage submersible pump designed for pumping domestic wastewater.

The pump is equipped with a grinder system that grinds destructible solids into small pieces to lead them through pipes with a relatively small diameter.

UNILIFT APG pumps are ideal for use in sparsely populated areas, where gravity sewage systems are not available.

The solution is ideal in, for example, one-family or two-family houses, residential building services and areas with large terrain-level differences.

For residential building services and light commercial applications, we recommend using the 3-phase version of the product.

The pump is available for two types of installation:

{ _BL_ }

submerged installation on auto-coupling systems.

submerged installation, free-standing.

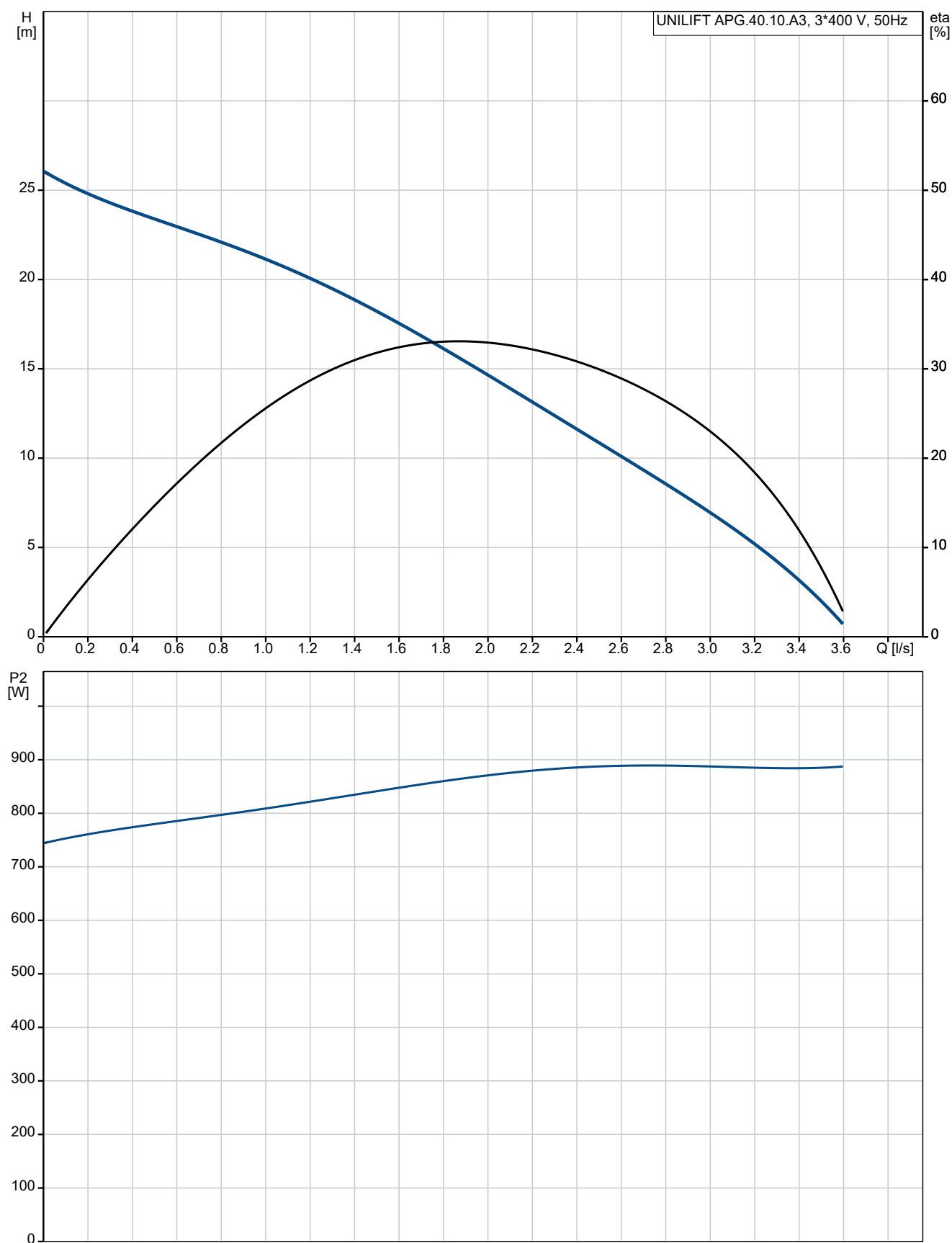
The pump is made of wear-resistant materials, such as cast iron and stainless steel.

These materials ensure reliable operation.

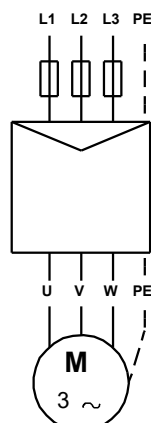
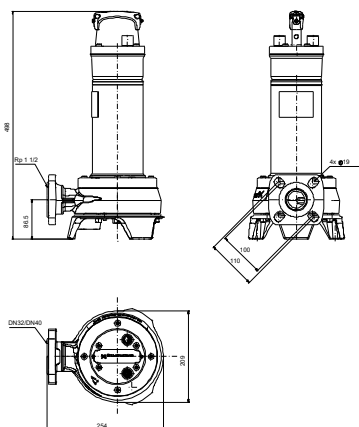
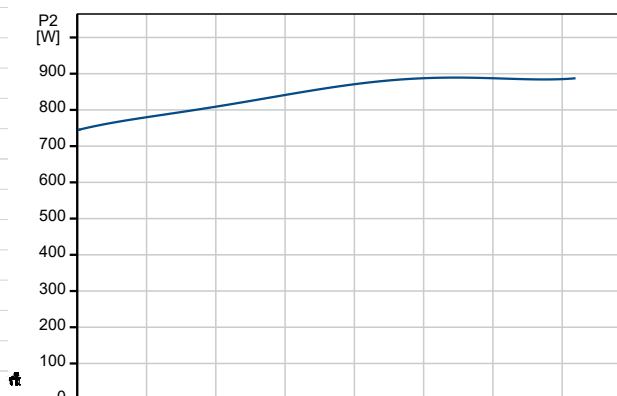
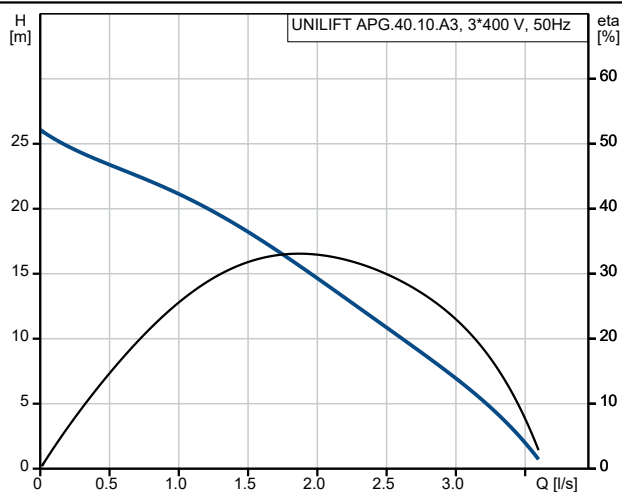
The surface of the pump is smooth to prevent dirt and impurities from sticking.

Four corrosion-resistant screws secure the motor to the pump housing and allow for easy service of the pump.

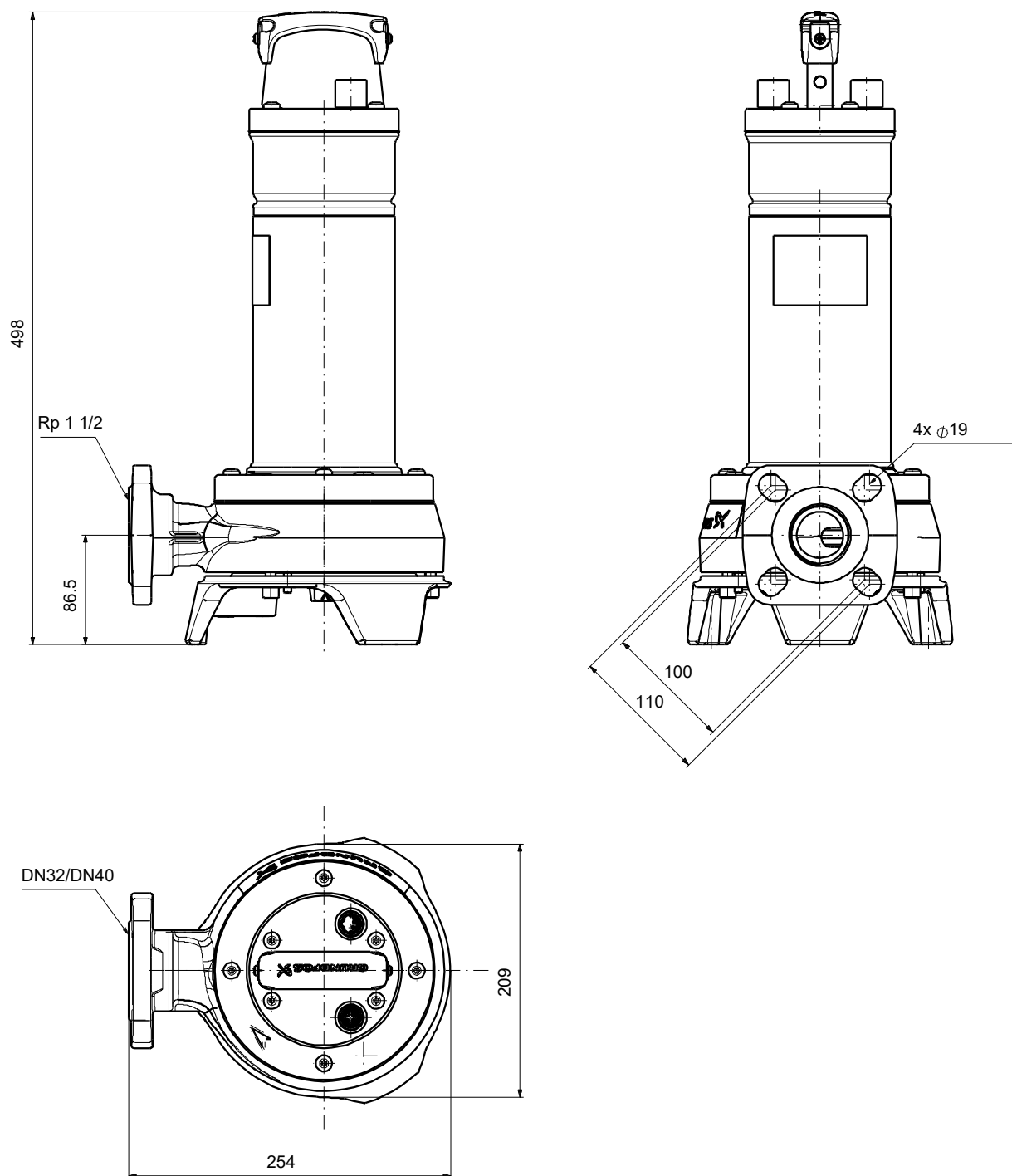
On request UNILIFT APG.40.10.A3 50 Hz



Description	Value
General information:	
Product name:	UNILIFT APG.40.10.A3
Product No:	On request
EAN number:	On request
Technical:	
Rated flow:	2 l/s
Rated head:	15 m
Type of impeller:	Grinder system
Max. Particle:	40 mm
Approvals:	CE,EAC,AR_IRAM,LGA,UKCA,S EPRO
Model:	A
Materials:	
Pump housing:	Cast iron
Pump housing:	EN 1561 EN-GJL-200
Impeller:	Composite
Impeller:	PPE-PS-GF30
Motor house:	Stainless steel
Motor house:	EN 1.4301
Motor house:	AISI 304
Installation:	
Range of ambient temperature:	0 .. 40 °C
Type of outlet connection:	DIN / Rp
Size of outlet connection:	DN 32/40
Pressure rating for connection:	PN 10
Maximum installation depth:	7 m
Auto coupling:	96076063
Liquid:	
Liquid temperature range:	0 .. 70 °C
Density:	998.2 kg/m³
Electrical data:	
Power input P1:	1.1 kW
Rated power - P2:	1 kW
Mains frequency:	50 Hz
Rated voltage:	3 x 400 V
Rated current:	2.8 A
Rated speed:	2850 rpm
Enclosure class (IEC 34-5):	IP68
Insulation class (IEC 85):	F
Length of power cable:	10 m
Power plug:	No plug
Controls:	
Float switch (Yes/No):	Y
Others:	
Net weight:	23.2 kg
Gross weight:	24.8 kg
Shipping volume:	0.042 m³
Sales region:	Europe/Argentina
Danish VVS No.:	391331711
Swedish RSK No.:	5885559
Finnish LVI No.:	4836186
Norwegian NRF no.:	9045606
Country of origin:	HU
Custom tariff no.:	84137021
Environmental approvals:	WEEE

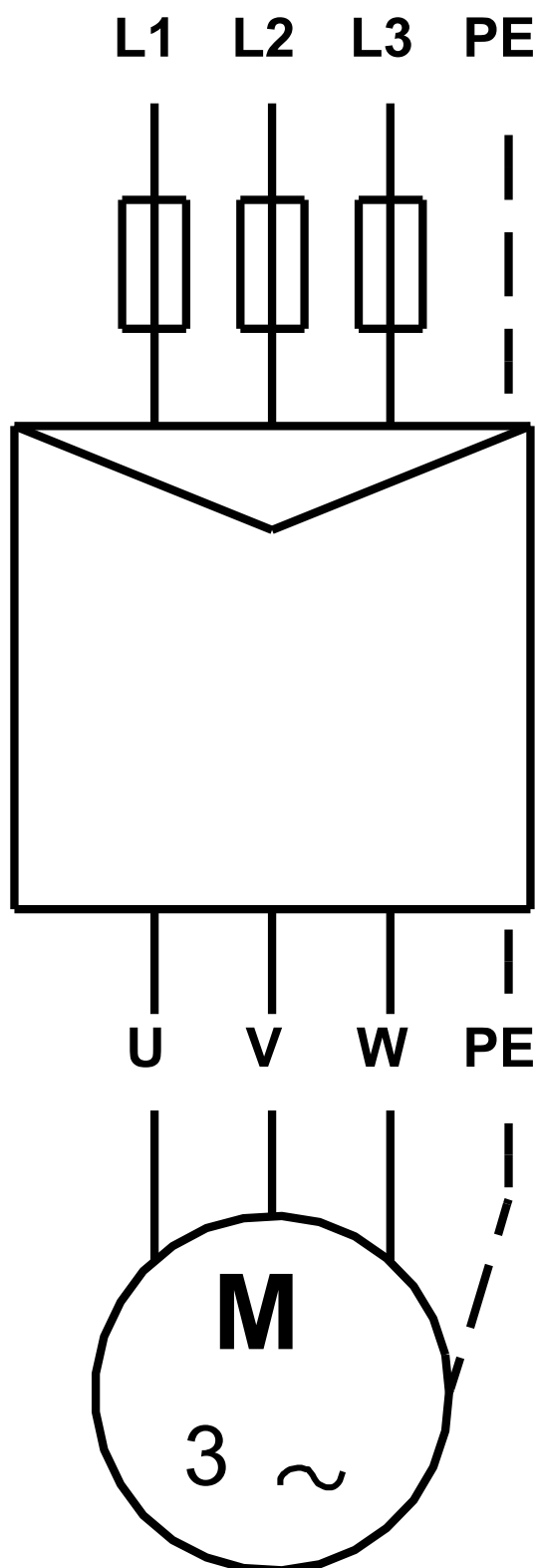


On request UNILIFT APG.40.10.A3 50 Hz



Note! All units are in [mm] unless others are stated.
Disclaimer: This simplified dimensional drawing does not show all details.

On request UNILIFT APG.40.10.A3 50 Hz



Note! All units are in [mm] unless others are stated.