

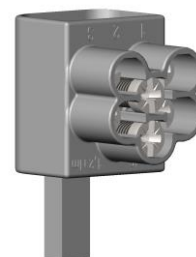


# Technical Data Sheet

Date: 2019-05

Page: 1 of 1

## Feed-In Terminals AS/3x16 SNS AS/3x16 SNK, AS/2x25 SNK



<b>Application</b>	feed-in terminal for the connection of aluminium or copper conductors eg. to MCBs or RCDs.
<b>Standards</b>	VDE 0220-3: Specifications for single and multiple cable clamps with insulating parts in electrical power cable installations up to 1000 V
<b>Connection</b>	AS/3x16: three conductors* 16 sqmm stranded or fine stranded 10 sqmm with ferrule AS/2x25: two conductors* 25 sqmm stranded or fine stranded 16 sqmm with ferrule *solid/stranded copper conductors or solid aluminium conductors
<b>Ratings</b>	AS/3x16: 63 A / 690 V* AC/DC AS/2x25: 100 A / 690 V* AC/DC *single pole application: 1000 V AV/DC
<b>Materials</b>	base: brass, tin plated screws: steel, zink plated housing: PC/ABS, flame retardant, halogene free
<b>Mounting</b>	direct mounting between conductors and terminals designed for copper wire only. SNK-types with additional snap-on features for easy assembly.
<b>Tightening Torque</b>	AS/3x16: 1.2 Nm (M4) AS/2x25: 2 Nm (M6)
<b>Safety</b>	edges rounded
<b>Environment Protection</b>	all materials and manufacturing processes comply with RoHS regulations.

AS/3x16 SNS

AS/3x16 SNK

AS/2x25 SNK

