

TECHNICAL DATA SHEET



TC 906/800/650

Cable connection chamber

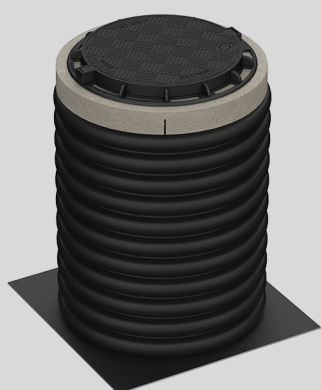
For use with manhole top
According to EN 124-1
Classification: A15 - B125

PRODUCT DESCRIPTION

Cable connection chamber TC 906/800/650 is made of polypropylene (PP) which provides high resistance to corrosion and chemical substances. According to EN124, chamber is meant for use with B125 (125kN = 12.5t) cast iron chamber cover or A15 (15kN = 1.5t) PE cover. Large inside diameter of 800 mm provides optimal service space. The square base (1000 × 1000 mm) secures the chamber in soil. Inner and outer surfaces of the chamber are black.

Material: PP (Polypropylene), ring stiffness \geq SN8.

Chamber is produced according to: EN 14802; Lattelecom TS 18800-003-10 standard and test specifications.



APPLICATION AREA

Chamber can be used for cable connections of telecommunications networks, optical cable lines, power cable lines, railway signal lines, street lighting. If used with an cast iron manhole cover (according to B125 specification) chambers are suitable for sidewalks, pedestrian zones, parking areas or parking area pavements. A15 covers must be used in pedestrian and cycling zones or green areas (with no traffic). The chamber cannot be used under streets/roads.

PRODUCT DIMENSIONS

Ring stiffness:

\geq SN8

Outside OD, mm	906
Inside ID, mm	800
Height, mm	650 (height can be changed on demand)
Base thickness, mm	8.0
Base area, m ²	1

PRODUCT PARAMETERS

Parameter	Value		Test method
Material	PP		EN 1852-1
Load bearing capacity, kN	With type A cover	With type B cover	EN 124-1
	15	125	
Ring stiffness	\geq SN8		EN 9969