

Data sheet for SIMOTICS S-1FK2

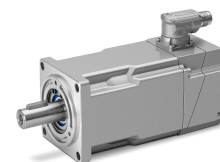


Figure similar

MLFB-Ordering data

1FK2104-5AK10-0SA0

Client order no. :

Order no. :

Offer no. :

Remarks :

Item no. :

Consignment no. :

Project :

Basic motor data		Mechanical data	
Motor type	Permanent-magnet synchronous motor, Natural cooling, IP64	Design acc. to Code I	IM B5 (IM V1, IM V3)
Motor type	High Dynamic	Vibration severity grade	Grade A
Static torque	2.40 Nm	Shaft height	40
Static current	4.4 A	Flange size (AB)	80 mm
Maximum torque	7.60 Nm	Centering ring (N)	70 mm
Maximum current	16.0 A	Hole circle (M)	90 mm
Maximum speed	8000 rpm	Screw-on hole (S)	6.5 mm
Rotor moment of inertia	0.650 kgcm ²	Overall length (LB)	170 mm
Weight	3.7 kg	Diameter of shaft (D)	19 mm
		Length of shaft (E)	40 mm
		Length of flange diagonal (P)	105 mm
		Shaft extension	Plain shaft

Rated data

SINAMICS S210, 3AC 400V

Rated speed	6000 rpm
Rated torque	1.70 Nm
Rated current	3.2 A
Rated power	1.07 kW

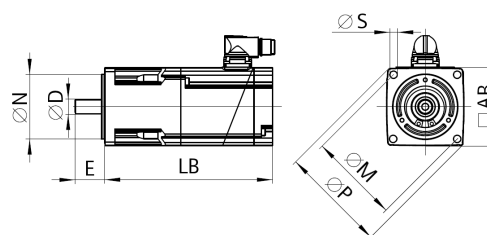


Figure similar

Encoder system

Encoder system	Encoder AS22DQC: Absolute encoder single turn 22 bit
----------------	--

Motor connection

Connection type	OCC for S210
Connector size	M17

1FK2104-5AK10-0SA0

Figure similar

¹⁾ Up to three consecutive emergency stops and up to 25% of all emergency stops as a Wmax high energy stop possible.

²⁾ Typical value for 20°C ambient temperature. At -15°C the break-induced currents can be increased by up to 30%.