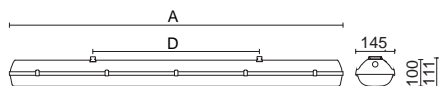


PRIMA LED Ex PRIMA LED TUBE

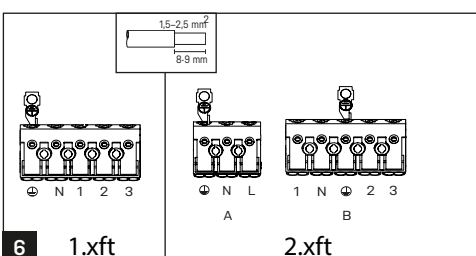
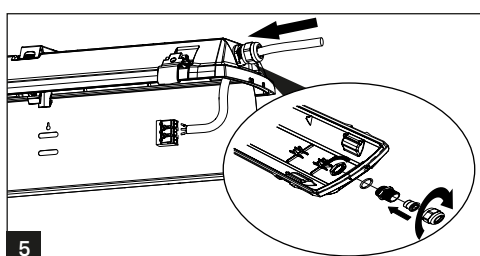
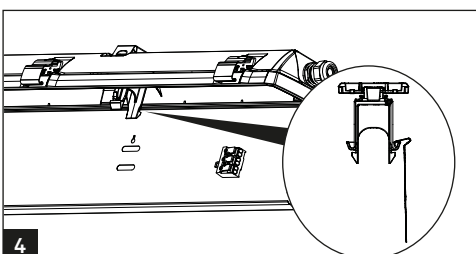
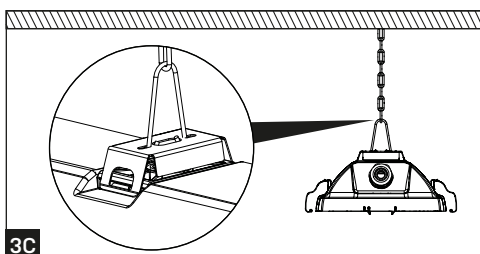
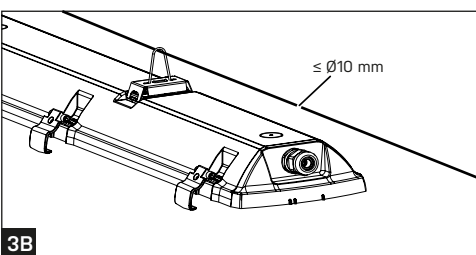
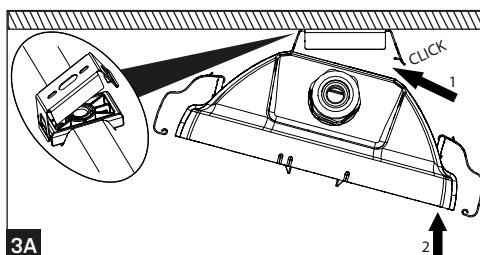
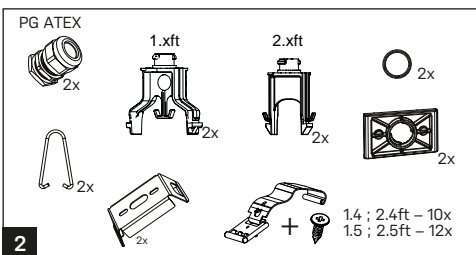
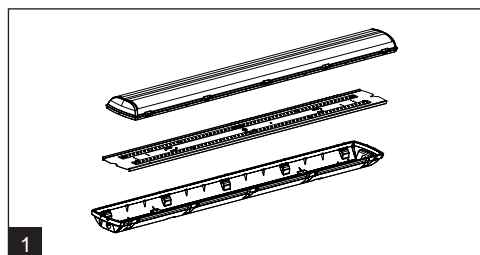
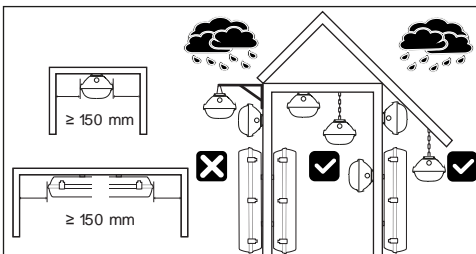


IP65

230V
50Hz



	A [mm]	D [mm]
1.4ft	1272	700
1.5ft	1572	940
2.4ft	1272	700
2.5ft	1572	940

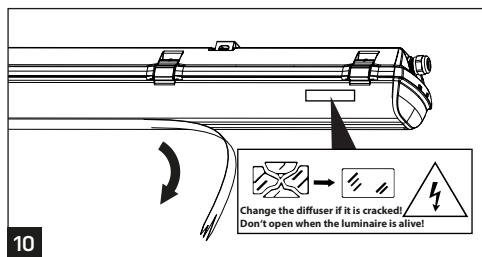
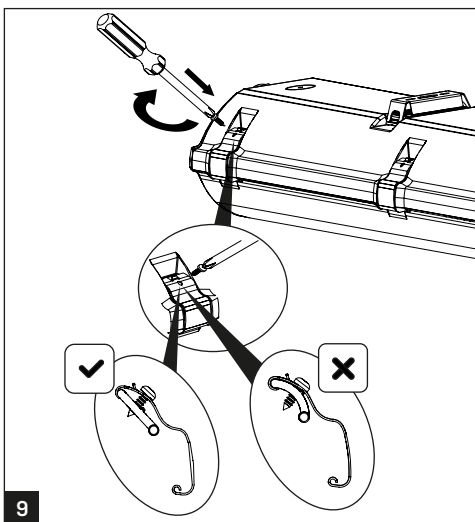
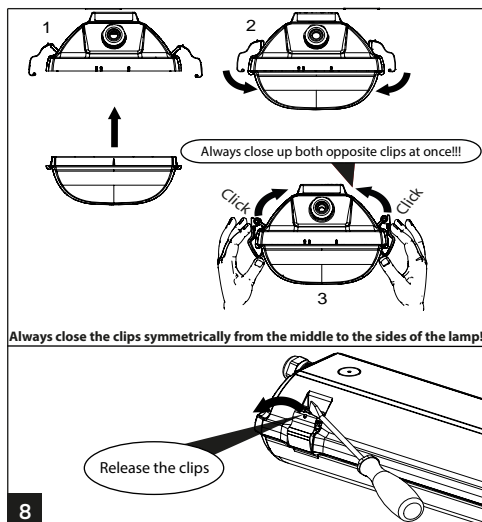
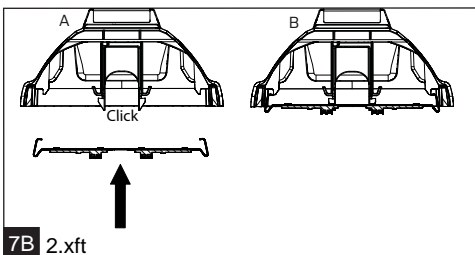
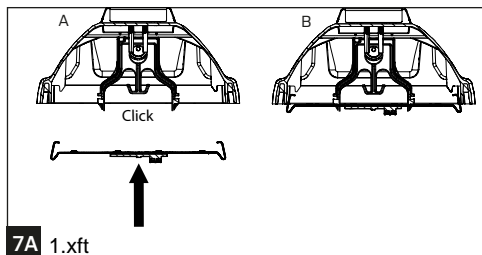


PRIMA LED Ex PRIMA LED TUBE



IP65

230V
50Hz



The light source in this luminaire may be replaced only by the manufacturer or its contractual service technician or a similarly qualified person!

Installation can only be carried by an authorized person and according to the mounting instructions. Any other installation is considered to be improper. For right finished mounting is necessary ensure by screws the clips holding the diffuser - shown picture no.10. For well installation and good luminaire work is necessary ensure a planarity of a mounting surface. Make sure that the luminaire is always disconnected from the power supply before the installation work. Do not use the luminaire if damaged or if damaged the power cable. Only damp microfiber cloth can be used for cleaning. Technical changes are subjected without notice. Do not dispose the luminaire or its parts as household waste, but make the proper recycling.

Technical instructions for instalation of luminaires series LED Ex

For the instalation and operation in explosive environments it is essential to obey safety conditions according to national laws and standards.

1. Take out the luminaire from its transport package
2. Loosen the steel clips and dismount the diffuser
3. Push the hooks on the spacer holding the luminaires reflector together and take the reflector out of the luminaire
4. Mount the empty housing in one of the described ways according to the manual
5. Pull the connection cabel through the M20 (Pg13,5) cable gland type ATEX. Tighten the cable gland.
The connection cable must have an outer diameter inbetween 7 mm to 13 mm. This is crucial for a proper function of the cable gland.

The unused cable gland is sealed with a ATEX plug.

6. Connect the connection cabel to the free side of the terminal block as follows.

on terminal L1 – phase conductor on terminal L1, L2, L3 – phase conductor
on terminal N – neutral conductor on terminal N – neutral conductor

on terminal  – earthing conductor on terminal  – earthing conductor

Take care about the correct wire stripping (9-10mm) and proper insertion of wire into the terminal block. The terminal block allows to use wires with a cross section of 0,5 – 2,5mm² (AWG 13 to AWG 20). In case of continious wiring keep maximum number of luminaires according to Tab.2.

7. Put the reflector back into the luminaire.
8. Remount the diffuse, close the steel clips and secure them with the corresponding screws

Manufacturer is not responsible for damages caused due to disregard of this technical instructions!

1. Usage of luminaires

These luminaires are used in environments with explosion hazard:

Tab.1

	Description of outerinfluences	Area classification	
		Description	According to standard
Explosion hazard of flammable dust	BE3N1	ZONE 22	EN 60 079-17 ed.4:2014 EN 60 079-14 ed.4:2014 EN 60 079-10-2 ed.2:2015
Explosion hazard of flammable gas and vapour	BE3N2	ZONE 2	EN 60 079-10-1:2009 EN 60 079-14 ed.4:2014
Hazard of fire or explosion of explosives	BE3N3	V1	CSN 33 2340 ed.2:2010

The luminaires are designed for ambient temperatures from -20 °C to +40°C (-4° F to +104° F)

Ex II 3G Ex nA IIC T6 Gc ; Ex II 3D Ex tc IIIC T85°C Dc IP65

2. Conditions of use and maintainance

Luminaires which are used in the above mentioned environments are under reference to the standards which are listed in Tab.1

- The luminaire must not be opened if the terminal block is voltage-carrying. Change the diffuser if it is cracked!
- LED components are included inside the luminaire. The light source contained in this luminaire shall only be replaced by the manufacturer or his service agent or a similar qualified person.

- The opening in the unused cable gland must be sealed with a ATEX plug

Warning: Potential electrostatic charping hazard. In an environment with explosion hazard the luminaire should be cleaned only with a moist cloth and the operative has to be earthed.

- The luminaire Ex is approved for single and triple phase continuous wiring. Maximum allowed number of luminaires for one phase is stated in Tab.2.

- The recommended fuse rating for continiously wired luminaires is type B; 10 A or 16 A

3. Certification

Below stated luminaires have the following certificate

Tab.2

Luminaire type	automatic cutout 10A	automatic cutout 16A
1.4ft	31	50
1.5ft	18	30
2.4ft	18	30
2.5ft	18	30