



SIRIUS SOFT STARTER, SIZE S2, 63A,
30KW/400V, 40 DEGREES, 200-480V AC,
24V AC/DC, SPRING-LOADED TERMINALS

General details:

Product brand name		SIRIUS
Product equipment		
• integrated bridging contact system		Yes
• thyristors		Yes
Product function		
• intrinsic device protection		No
• motor overload protection		No
• evaluation of thermal resistor motor protection		No
• reset external		No
• adjustable current limitation		No
• inside-delta circuit		No
Product component / outlet for enine brake		No
Item designation		
• according to DIN EN 61346-2		Q
• according to DIN 40719 extendable after IEC 204-2 / according to IEC 750		G

Power Electronics:

product designation		soft starters for standard applications
Operating current		

• at 40 °C / rated value	A	63
• at 50 °C / rated value	A	58
• at 60 °C / rated value	A	53
Emitted mechanical power / for three-phase servomotors		
• at 230 V / at standard switching / at 40 °C		
• rated value	W	18,500
• at 400 V / at standard switching / at 40 °C		
• rated value	W	30,000
yielded mechanical performance (hp) / for three-phase squirrel cage motors / at 200/208 V / at standard circuit / at 50 °C / rated value	hp	15
Operating frequency		
• rated value	Hz	50 ... 60
Relative negative tolerance / of the operating frequency	%	-10
Relative positive tolerance / of the operating frequency	%	10
Operating voltage / with standard circuit / rated value	V	200 ... 480
Relative negative tolerance / of the operating voltage / with standard circuit	%	-15
Relative positive tolerance / of the operating voltage / with standard circuit	%	10
Minimum load in % of I_M	%	10
Continuous operating current in % of I_e / at 40°C	%	115
Active power loss / at operating current / at 40°C / during operating phase / typical	W	12

Control electronics:		
Type of voltage / of the controlled supply voltage		AC/DC
Control supply voltage frequency / 1 / rated value	Hz	50
Control supply voltage frequency / 2 / rated value	Hz	60
Relative negative tolerance / of the control supply voltage frequency	%	-10
Relative positive tolerance / of the control supply voltage frequency	%	10
Control supply voltage / 1		
• at 50 Hz / for AC	V	24
• at 60 Hz / for AC	V	24
Relative negative tolerance / of the control supply voltage / at 60 Hz / for AC	%	-10
Relative positive tolerance / of the control supply voltage / at 60 Hz / for AC	%	10
Control supply voltage / 1 / for DC / rated value	V	24
Relative negative tolerance / of the control supply voltage / for DC	%	-10

Relative positive tolerance / of the control supply voltage / for DC	%	10
Type of display / for fault signal		red

Mechanical design:

Size of the engine control device		S2
Width	mm	55
Height	mm	160
Depth	mm	170
Type of mounting		screw and snap-on mounting
Built in orientation		With vertical mounting surface +/-10° rotatable, with vertical mounting surface +/- 10° tiltable to the front and back
Distance, to be maintained, to the ranks assembly		
• upwards	mm	60
• sideways	mm	30
• downwards	mm	40
Altitude of installation site / at a height over sea level	m	5,000
Cable length / maximum	m	300
Number of poles / for main current circuit		3

Electrical connections:






Design of the electrical connection		
• for main current circuit		screw-type terminals
• for auxiliary and control current circuit		spring-loaded terminals
Number of NC contacts / for auxiliary contacts		0
Number of NO contacts / for auxiliary contacts		1
Number of change-over switches / for auxiliary contacts		0
Type of the connectable conductor cross section / for main contacts / for box terminal / when using the front clamping point		
• solid		2x (1.5 ... 16 mm²)
• finely stranded / with conductor end processing		0.75 ... 25 mm²
• stranded		0.75 ... 35 mm²
Type of the connectable conductor cross-section / for main contacts / for box terminal / when using the back clamping point		
• solid		2x (1.5 ... 16 mm²)
• finely stranded / with conductor end processing		1.5 ... 25 mm²
• stranded		1.5 ... 35 mm²
Type of the connectable conductor cross-section / for main contacts / for box terminal / when using both clamping points		
• solid		2x (1.5 ... 16 mm²)
• finely stranded / with conductor end processing		2x (1.5 ... 16 mm²)

<ul style="list-style-type: none"> • stranded 		2x (1.5 ... 25 mm²)
Type of the connectable conductor cross-section / for AWG conductors / for main contacts / for box terminal <ul style="list-style-type: none"> • when using the back clamping point • when using the front clamping point • when using both clamping points 		16 ... 2 18 ... 2 2x (16 ... 2)
Type of the connectable conductor cross-section <ul style="list-style-type: none"> • for auxiliary contacts <ul style="list-style-type: none"> • solid • finely stranded / with conductor end processing • for AWG conductors / for auxiliary contacts 		2x (0.25 ... 2.5 mm²) 2x (0.25 ... 1.5 mm²) 2x (24 ... 14)

Ambient conditions:

Ambient temperature <ul style="list-style-type: none"> • during operating • during storage 	°C	-25 ... 60
	°C	-40 ... 80
Derating temperature	°C	40
Protection class IP		IP00

Certificates/approvals:

General Product Approval		Test Certificates
 CQC	 CSA	ROSTEST  UL
Manufacturer		
Shipping Approval		other
 DNV	 GL	Manufacturer

UL/CSA ratings

yielded mechanical performance (hp) / for three-phase squirrel cage motors <ul style="list-style-type: none"> • at 220/230 V / at standard circuit <ul style="list-style-type: none"> • at 50 °C / rated value • at 460/480 V / at standard circuit <ul style="list-style-type: none"> • at 50 °C / rated value 	hp	20
	hp	40

Further information:

Information- and Downloadcenter (Catalogs, Brochures,...)

<http://www.siemens.com/industrial-controls/catalogs>

Industry Mall (Online ordering system)

<http://www.siemens.com/industrial-controls/mall>

CAX-Online-Generator

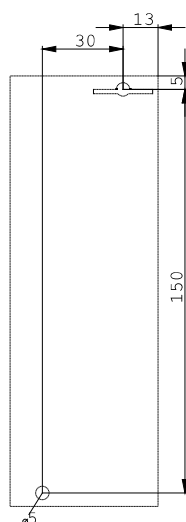
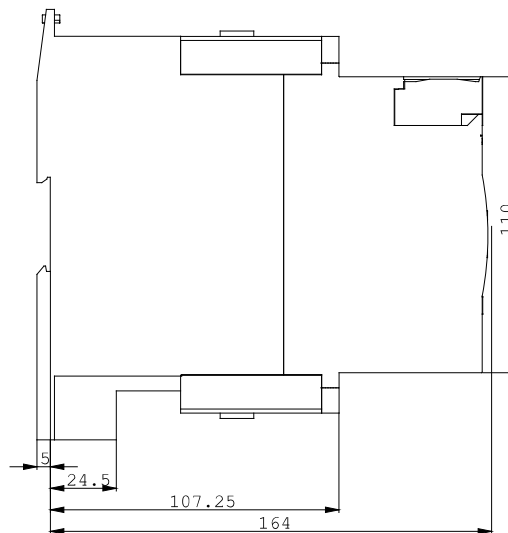
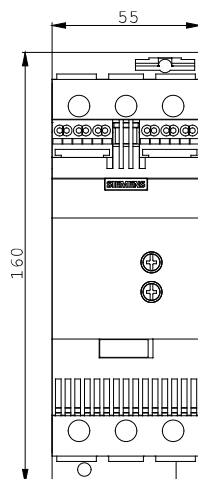
<http://www.siemens.com/cax>

Service&Support (Manuals, Certificates, Characteristics, FAQs,...)

<http://support.automation.siemens.com/WW/view/en/3RW3037-2BB04/all>

Image database (product images, 2D dimension drawings, 3D models, device circuit diagrams, ...)

http://www.automation.siemens.com/bilddb/cax_en.aspx?mlfb=3RW3037-2BB04



last change:

Oct 24, 2011